



Topdresser

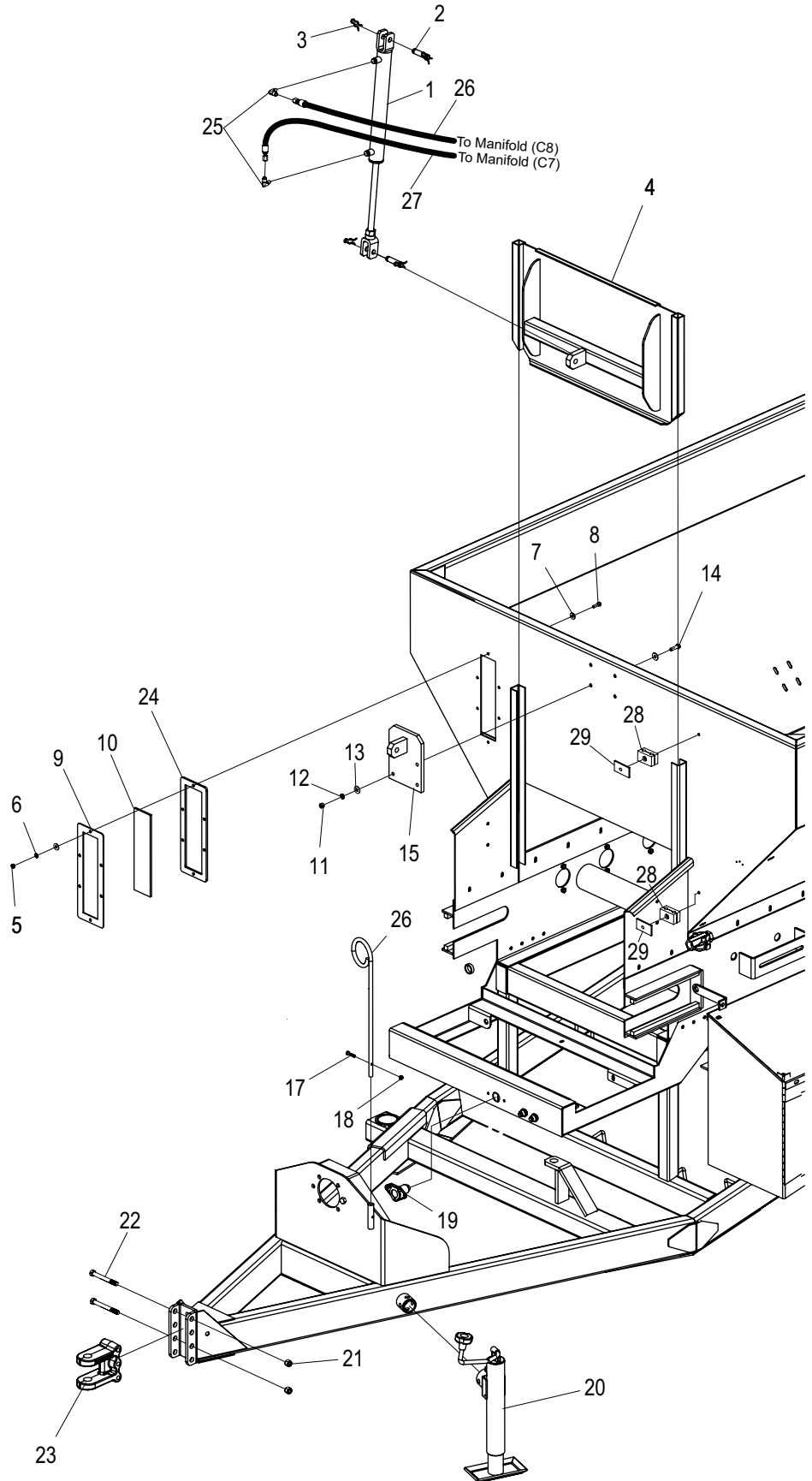
Model TD-FX650

Illustrated Parts Breakdown

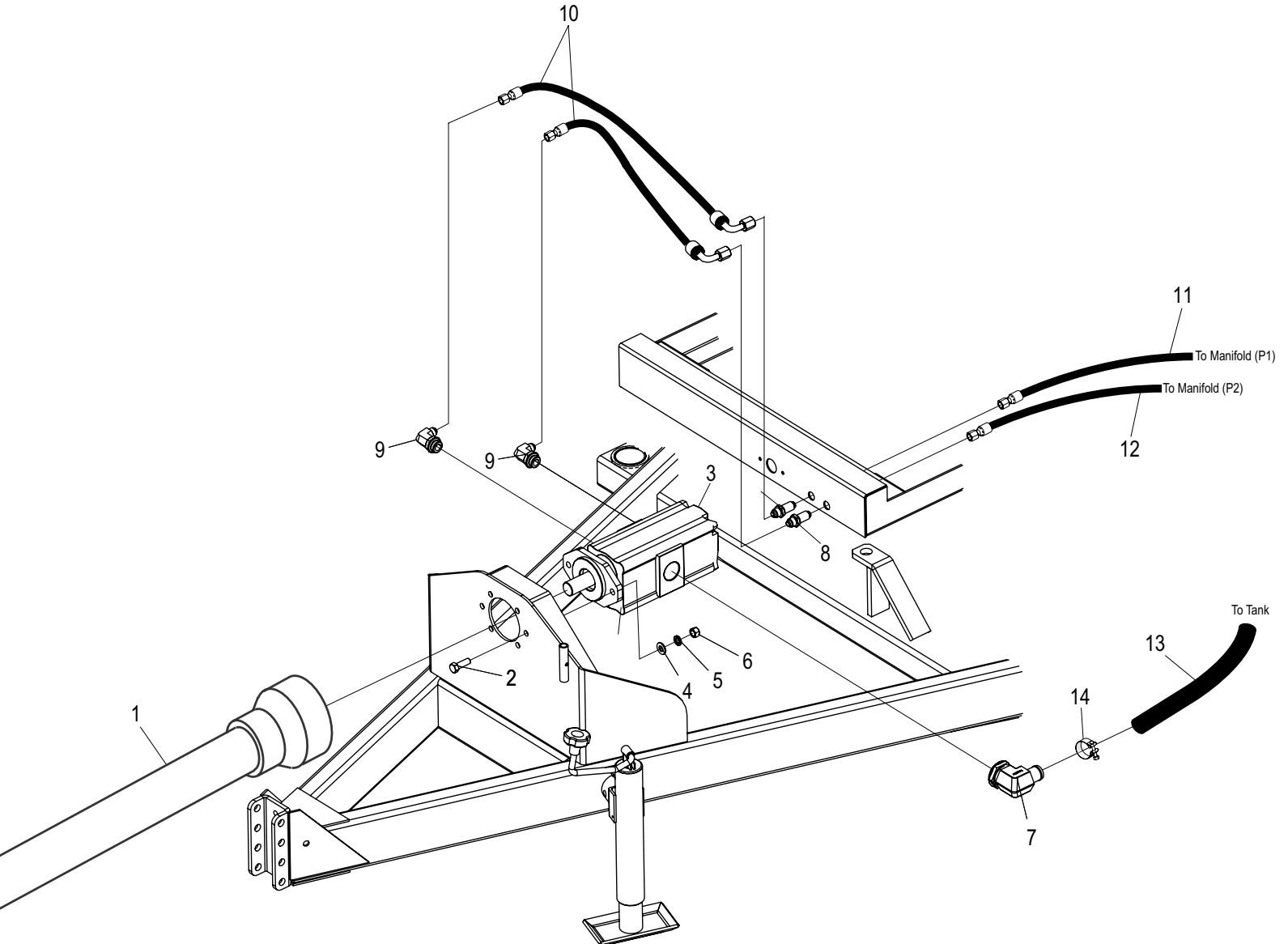
Page 1	Front End
Page 2	PTO and Pump Hydraulics
Page 3	Hydraulic Tank Assembly
Page 4	Axle and Wheel Assembly
Page 5	Front Roller Assembly
Page 6	Rear Roller Assembly
Page 7	Main Belt and Rubber Skirt
Page 8	Cross Conveyor
Page 9	Cross Conveyor Rubber Skirt
Page 10	Rear Endgate
Page 11	Side Conveyor Drive
Page 12	Side Conveyor Skirt and Shute
Page 13	Spinner Assembly
Page 14	Manifold and Fittings
Page 15	Transmitter/Receiver
Page 16	Receiver Wiring Diagram
Page 17	Brake Controller Junction Box

Front End

BOM ID	Part #	Description
1	800414	Front Door Cylinder
2	800565	5/8" Cylinder Pin
3	507274	Cylinder Pin Clip
4	800512	Front Door
5	000910	5/16-18 Hex Nut
6	000810	5/16 Lock Washer, Zinc
7	001030	5/16 Flat Washer
8	000221	5/16" x 1" HH Bolt
9	800426	Front Sight Gauge Spacer
10	800557	Sight Gauge Plastic
11	000915	3/8" Hex Nut
12	000820	3/8" Lock Washer
13	001035	3/8" Flat Washer
14	000275	3/8" x 1-1/4" HH Bolt
15	800525	Cylinder Mount Bracket
16	800556	Hose Holder
17	000184	1/4-20 x 1-1/4 HH Bolt, -GR 5
18	003001	1/4-20 Nylon Lock Nut, Zinc
19	100548	6 Pole Plug
20	100748	2K Jack
21	000950	1/2-13 Nylon Lock Nut
22	000500	1/2"-13 x 4-1/2"HHB
23	507018	3 Hole Clevis Coupler
24	800425	Rear Sight Gauge Spacer
25	702459	90° Fitting, (4 MJ - 4 MP)
26	801375	114" Hose (4FJX45 - 4FJX)
27	801383	123" Hose (4FJX45 - 4FJX)
28	510632	Hose Clamp Body
29	510630	Hose Clamp Top Plate

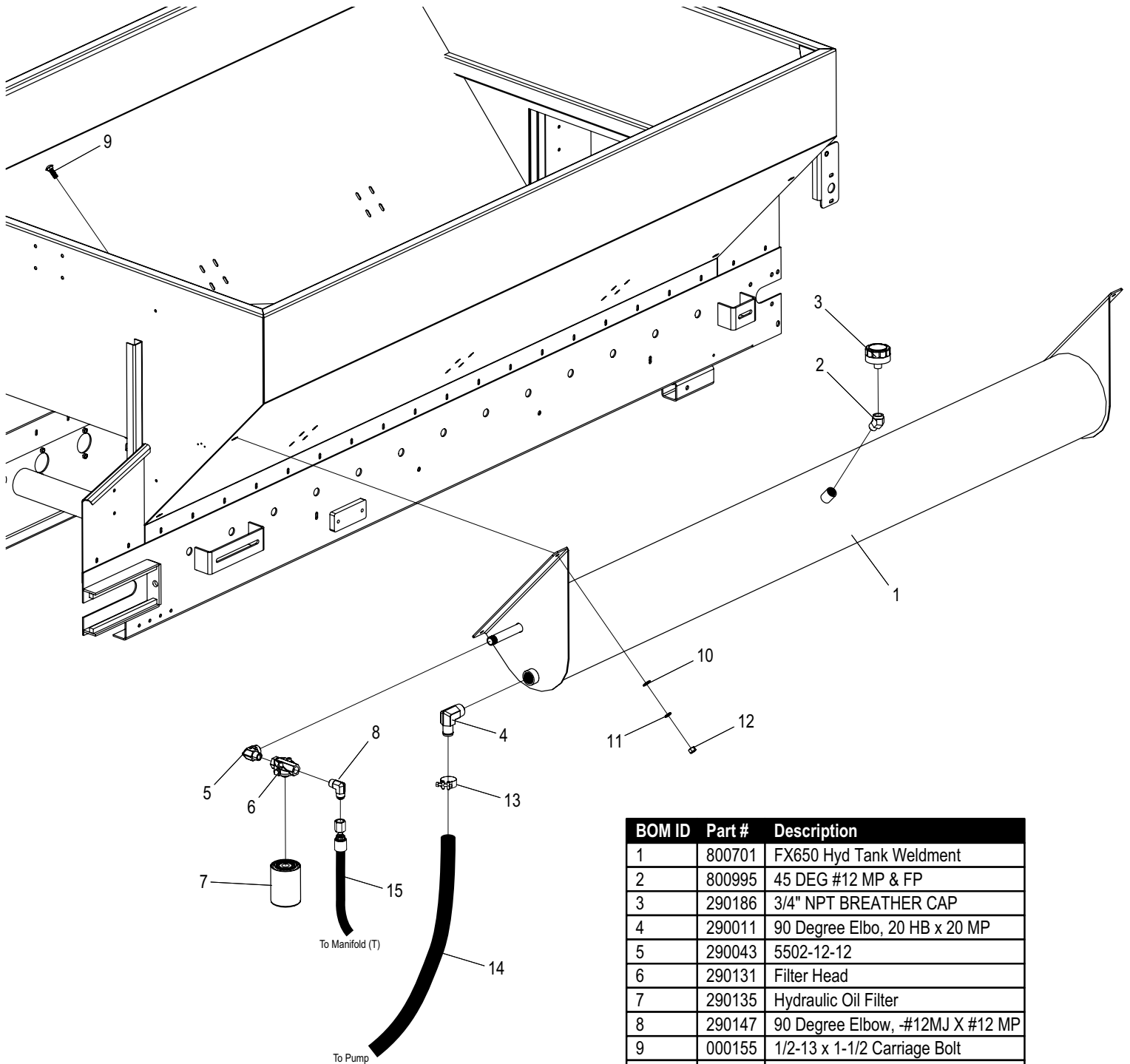


PTO and Pump Hydraulics



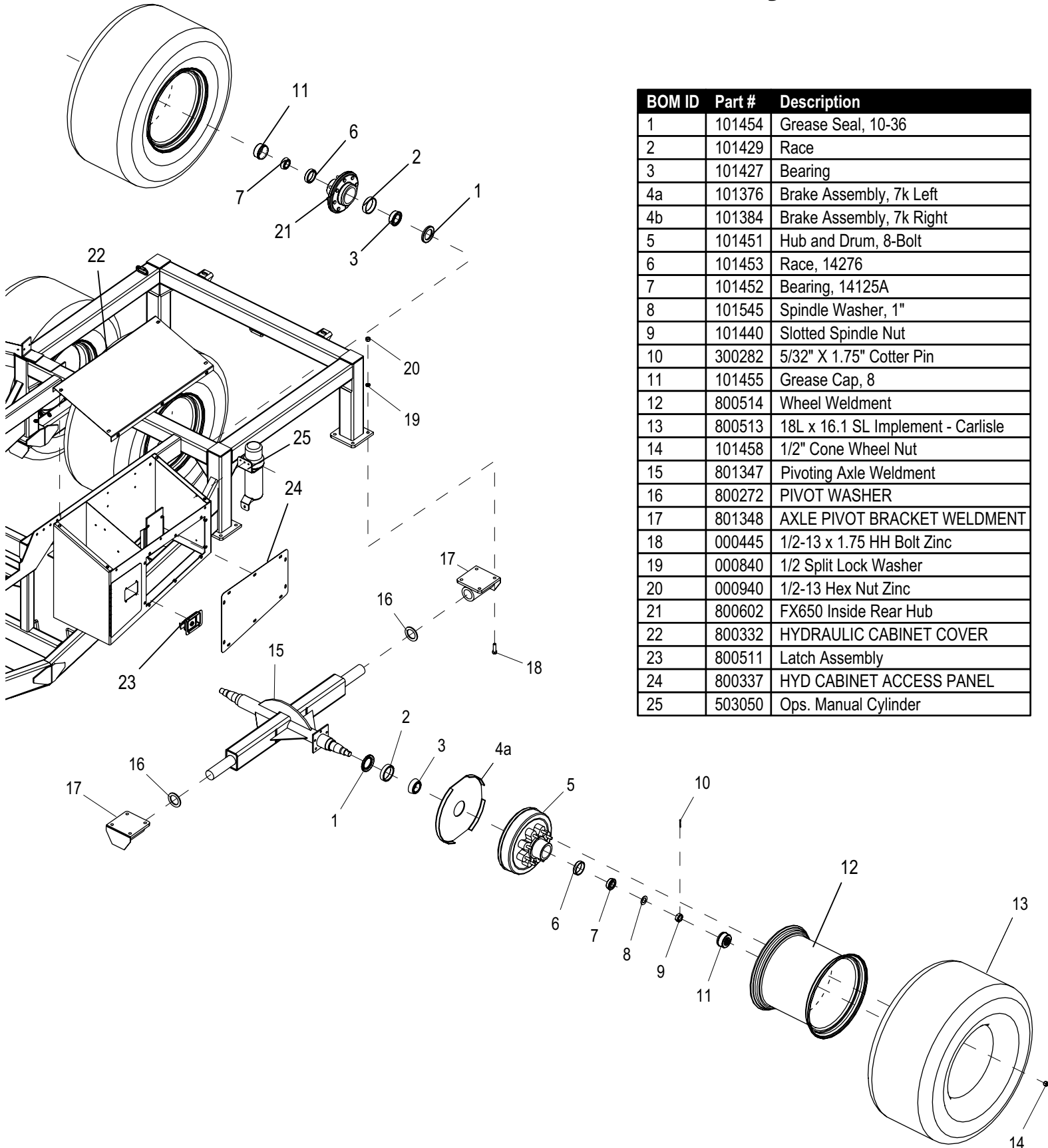
BOM ID	Part #	Description
1	830170	PTO Shaft Complete (540 RPM)
2	000435	1/2-13 x 1.50 HH Bolt Zinc
3	830164	Permco M2100 Double Pump
4	001061	1/2 SAE Flat Washer
5	000840	1/2 Split Lock Washer
6	000940	1/2-13 Hex Nut Zinc
7	290045	4601-20-24
8	290257	2700-8-8
9	290050	12MB-8MJ90
10	801326	40" Hose (8FJX - 8FJX90S)
11	801378	74" Hose (8FJX - 8FJX90L)
12	801377	74" Hose (8FJX - 8FJX90S)
13	801379	72" Hose (GH20SV)
14	290169	1-1/4" SV Hose Clamp

Hydraulic Tank Assembly



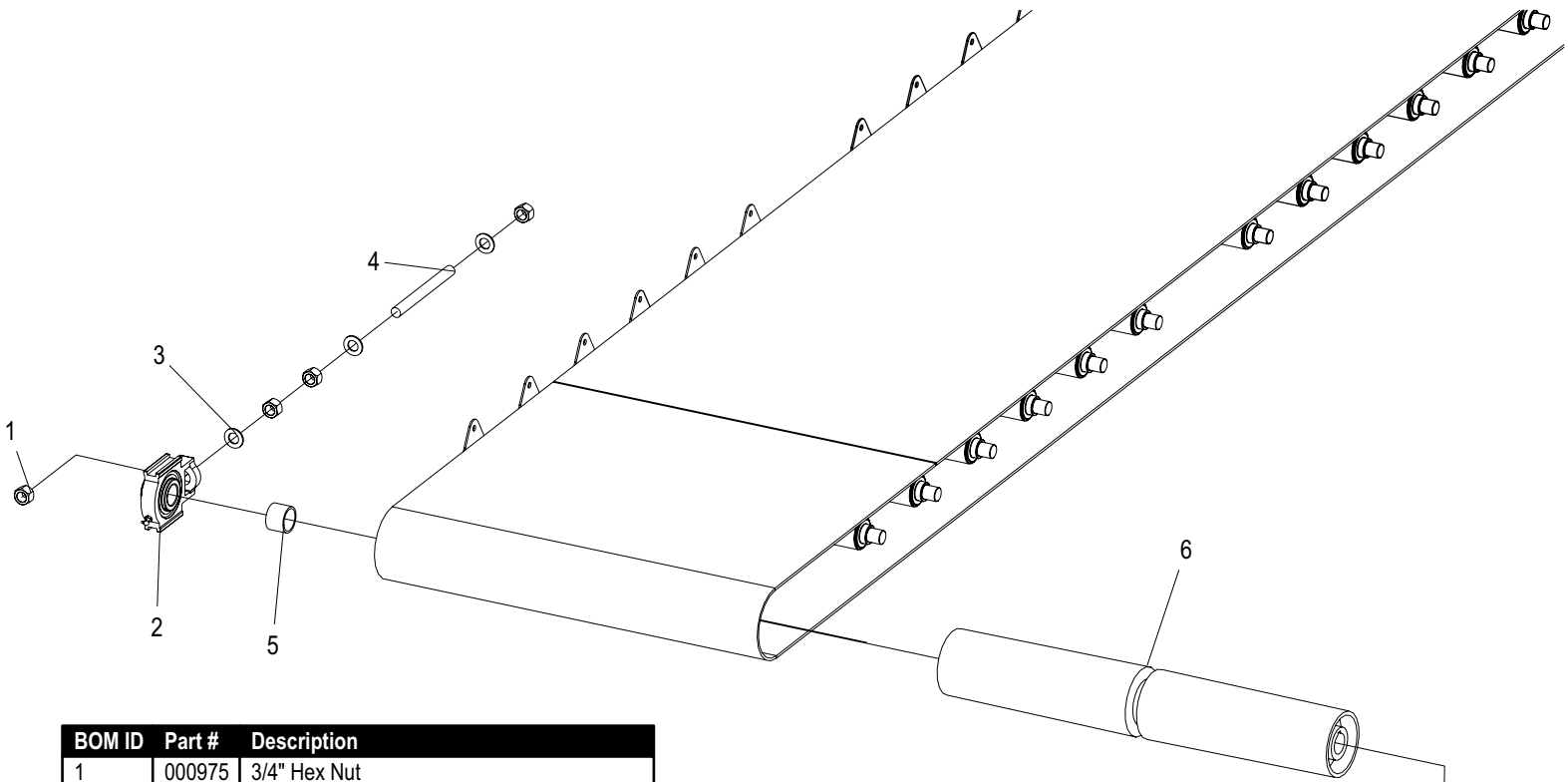
BOM ID	Part #	Description
1	800701	FX650 Hyd Tank Weldment
2	800995	45 DEG #12 MP & FP
3	290186	3/4" NPT BREATHER CAP
4	290011	90 Degree Elbo, 20 HB x 20 MP
5	290043	5502-12-12
6	290131	Filter Head
7	290135	Hydraulic Oil Filter
8	290147	90 Degree Elbow, -#12MJ X #12 MP
9	000155	1/2-13 x 1-1/2 Carriage Bolt
10	001061	1/2 SAE Flat Washer
11	000840	1/2 Split Lock Washer
12	000940	1/2-13 Hex Nut Zinc
13	290169	1-1/4" SV Hose Clamp
14	801379	72" Hose (GH20SV)
15	801380	61" Hose (12FJX - 12FJX90)

Axle and Wheel Assembly

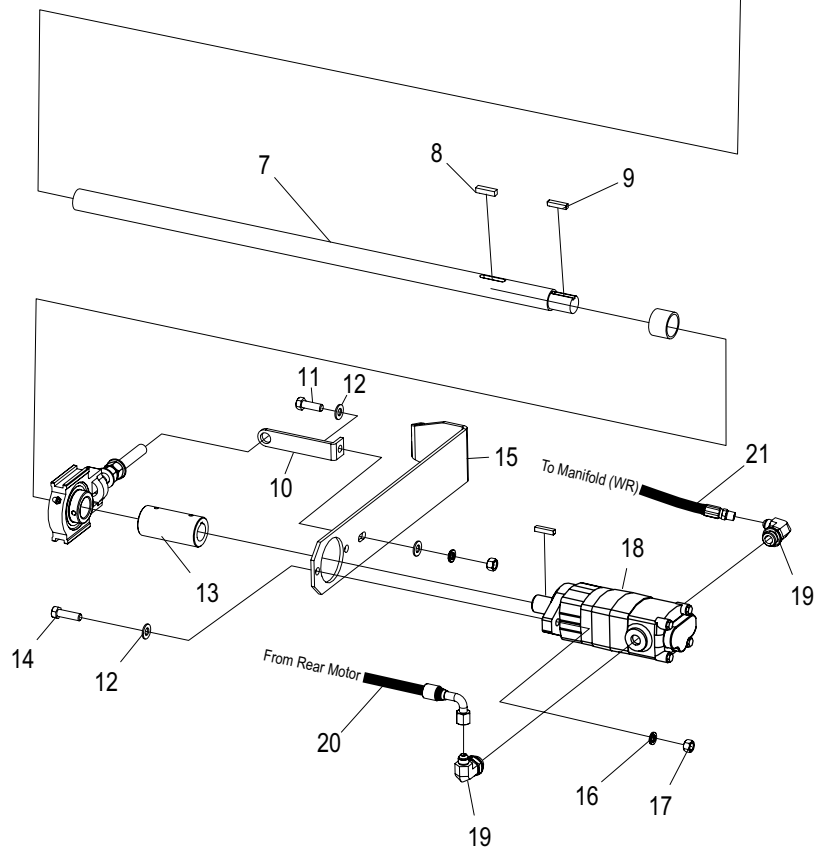


BOM ID	Part #	Description
1	101454	Grease Seal, 10-36
2	101429	Race
3	101427	Bearing
4a	101376	Brake Assembly, 7k Left
4b	101384	Brake Assembly, 7k Right
5	101451	Hub and Drum, 8-Bolt
6	101453	Race, 14276
7	101452	Bearing, 14125A
8	101545	Spindle Washer, 1"
9	101440	Slotted Spindle Nut
10	300282	5/32" X 1.75" Cotter Pin
11	101455	Grease Cap, 8
12	800514	Wheel Weldment
13	800513	18L x 16.1 SL Implement - Carlisle
14	101458	1/2" Cone Wheel Nut
15	801347	Pivoting Axle Weldment
16	800272	PIVOT WASHER
17	801348	AXLE PIVOT BRACKET WELDMENT
18	000445	1/2-13 x 1.75 HH Bolt Zinc
19	000840	1/2 Split Lock Washer
20	000940	1/2-13 Hex Nut Zinc
21	800602	FX650 Inside Rear Hub
22	800332	HYDRAULIC CABINET COVER
23	800511	Latch Assembly
24	800337	HYD CABINET ACCESS PANEL
25	503050	Ops. Manual Cylinder

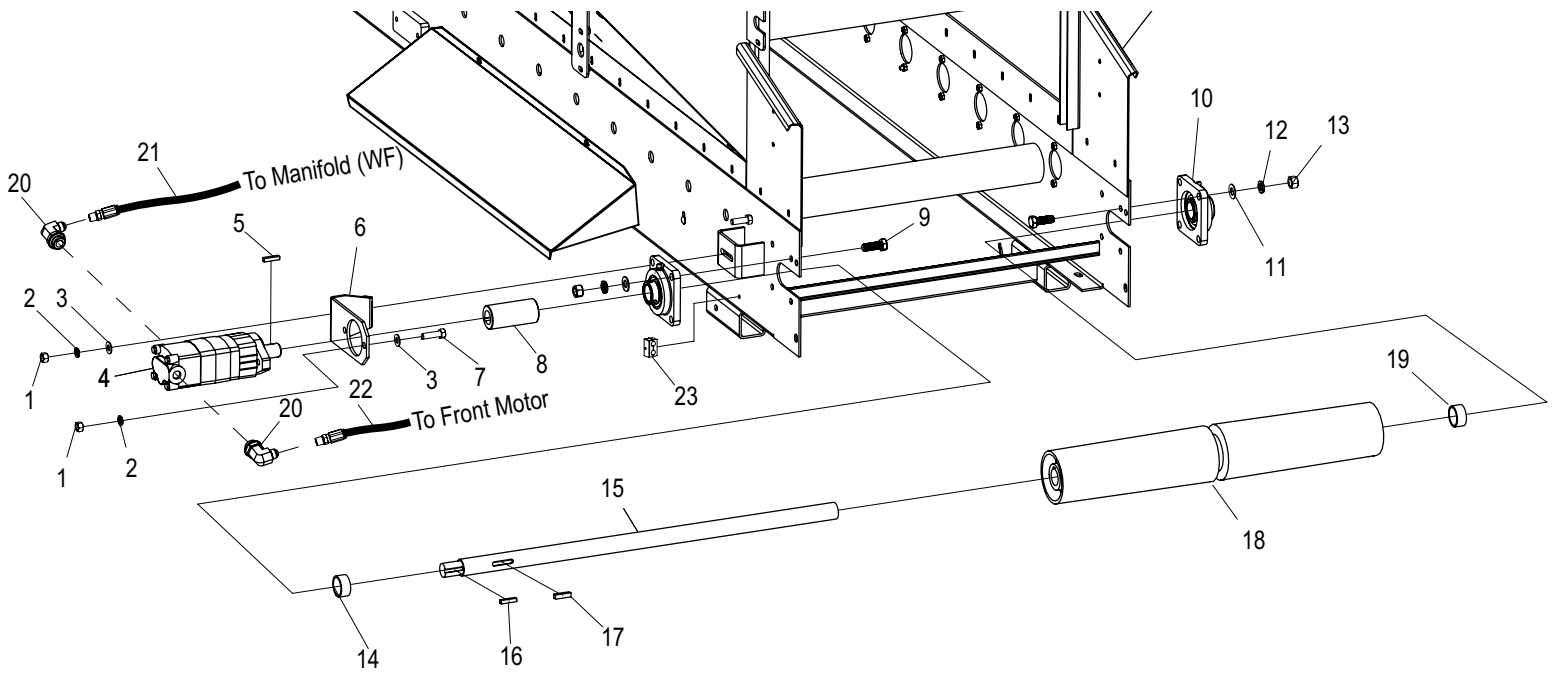
Front Roller Assembly



BOM ID	Part #	Description
1	000975	3/4" Hex Nut
2	801099	1-1/2" Take Up Bearing
3	001086	3/4" USS Flat Washer
4	801175	3/4" x 8.500" Threaded Rod
5	800584	Front Apron Driveshaft Bushing
6	800359	5" X 31" PULLEY
7	800530	Conveyor Pulley Driveshaft, Front
8	401580	.375" x 1.5" Key
9	702822	.313 x 1.5" Key
10	800543	Torque Arm Support Bracket
11	000435	1/2" x 1-1/2" Hex Head Bolt
12	001061	1/2" Flat Washer
13	290127	1 - 1/4" Shaft Coupling
14	000445	1/2" x 1.75" HH Bolt Zinc
15	800207	Torque Arm Bracket
16	000840	1/2" Lock Washer
17	000940	1/2" Hex Nut
18	800047	Apron Motor 104-1068
19	290050	90° Hydraulic Fitting, 12MB-8MJ90
20	801369	164" Hose, 8FJX - 8FJX90S (to Rear Motor)
21	801370	55" Hose, 8FJX - 8FJX (to WR)



Rear Roller

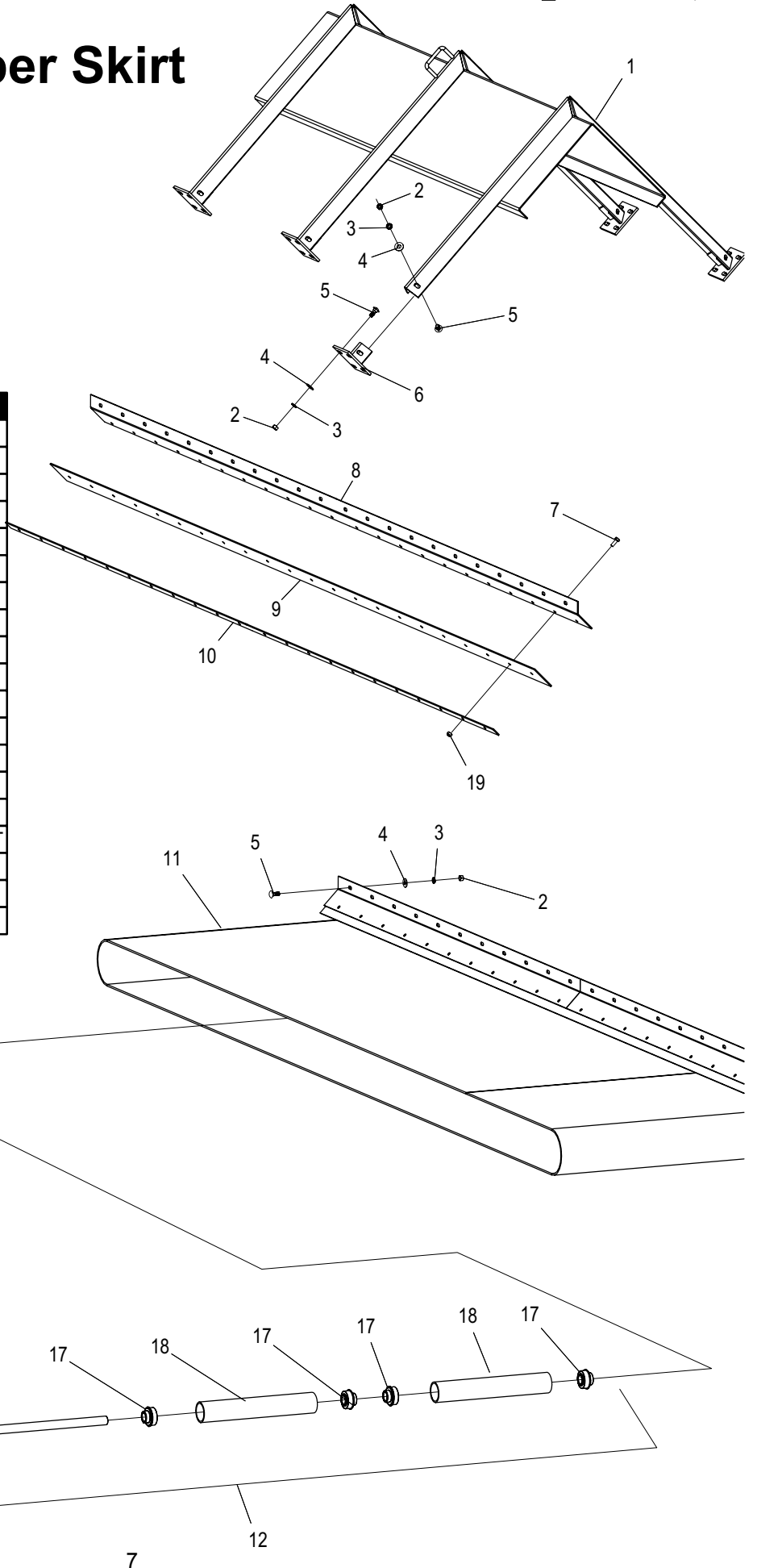


BOM ID	Part #	Description
1	000940	1/2-13 Hex Nut Zinc
2	000840	1/2 Split Lock Washer
3	001061	1/2 SAE Flat Washer
4	800047	Apron Motor 104-1068
5	702822	5/16 x 1.5 Hardened Key
6	800208	REAR TORQUE ARM
7	000445	1/2-13 x 1.75 HH Bolt Zinc
8	290127	1 - 1/4" Shaft Coupling
9	000625	5/8-11 x 1-3/4 Hex Head Bolt
10	400810	1-1/2" 4 Hole Flange Bearing
11	001076	SAE Standard Washer

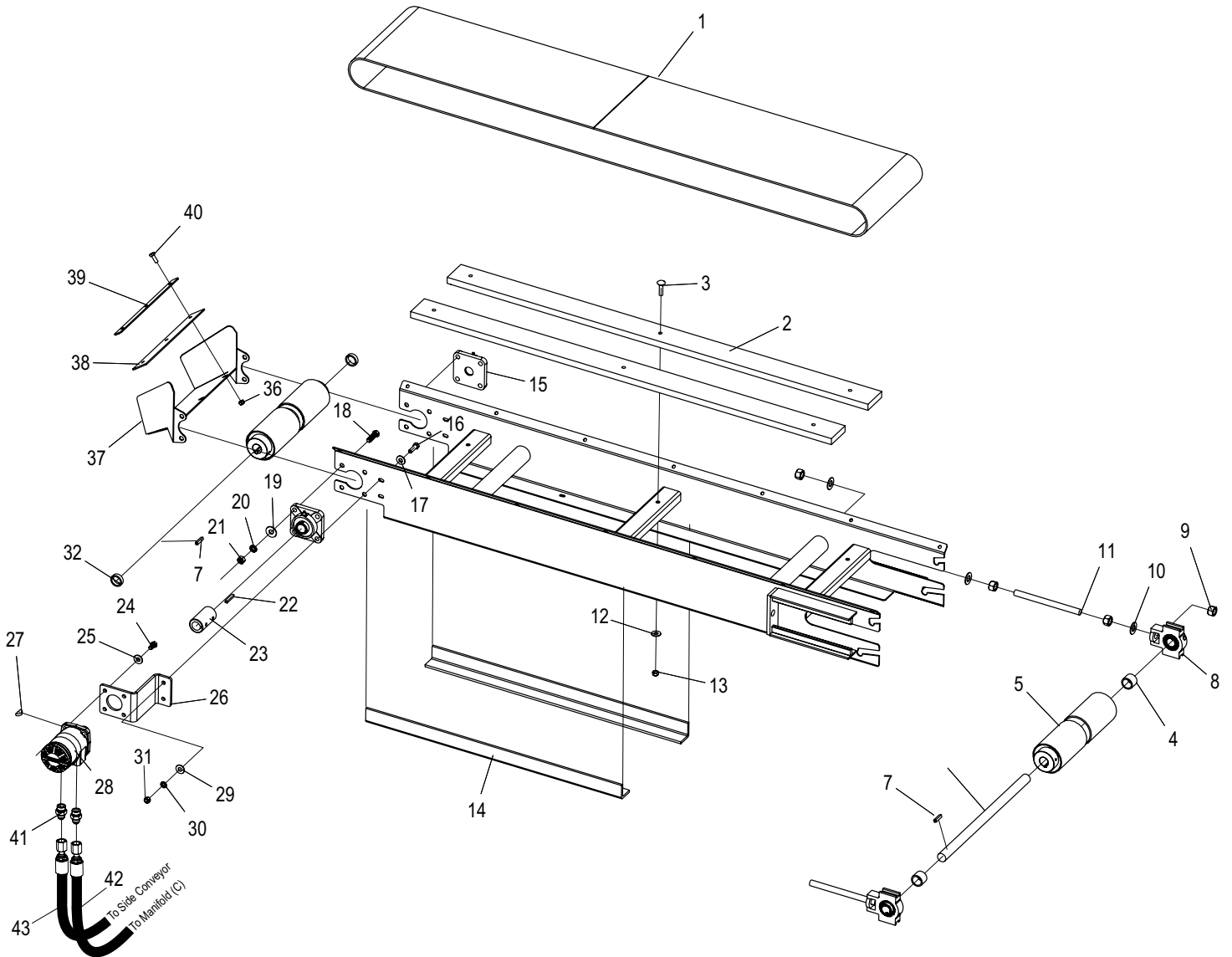
BOM ID	Part #	Description
12	000860	5/8 Split Lock Washer
13	000970	5/8-11 Hex Nut Zinc
14	800993	Rear Apron Driveshaft Bushing
15	800593	Conveyor Pulley Driveshaft, Rear
16	702822	5/16 x 1.5 Hardened Key
17	401580	3/8 x 1.5 Key
18	800359	5 X 31 B Groove Lagged Pulley
19	800993	Rear Apron Driveshaft Bushing
20	290050	90° Hydraulic Fitting, 8MJ x 12MB
21	801368	126" Hose, 8FJX - 8FJX (to WF)
22	801369	164" Hose, 8FJX - 8FJX90S (to Front Motor)
23	903443	1/2" Hose Clamp Assembly

Main Belt and Rubber Skirt

BOM ID	Part #	Description
1	800611	Inverted V Weldment
2	000910	5/16 Hex Nut
3	000810	5/16 Split Lock Washer
4	001030	5/16 USS Flat Washer
5	000121	5/16 x 3/4 Carriage Bolt
6	800610	Inverted V Mounting Bracket
7	000119	5/16 x 7/8 HHB
8	800491	650 Apron Skirtboard
9	800408	.12" x 3" x 132" Rubber Skirt
10	800551	Hopper Skirt Board Strip
11	800362	30.5" x 260" Black 120 Crescent Belt
12	800304	30" Idler Roller Weldment
13	001035	3/8 USS Flat Washer
14	000820	3/8 Lock Washer
15	000270	3/8 x 1 Hex Bolt
16	800307	30" IDLER SHAFT ROLLER WELDMENT
17	806102	1 INCH INSERT BEARING
18	800212	IDLER ROLLER TUBING
19	002999	5/16" Nylon Locknut



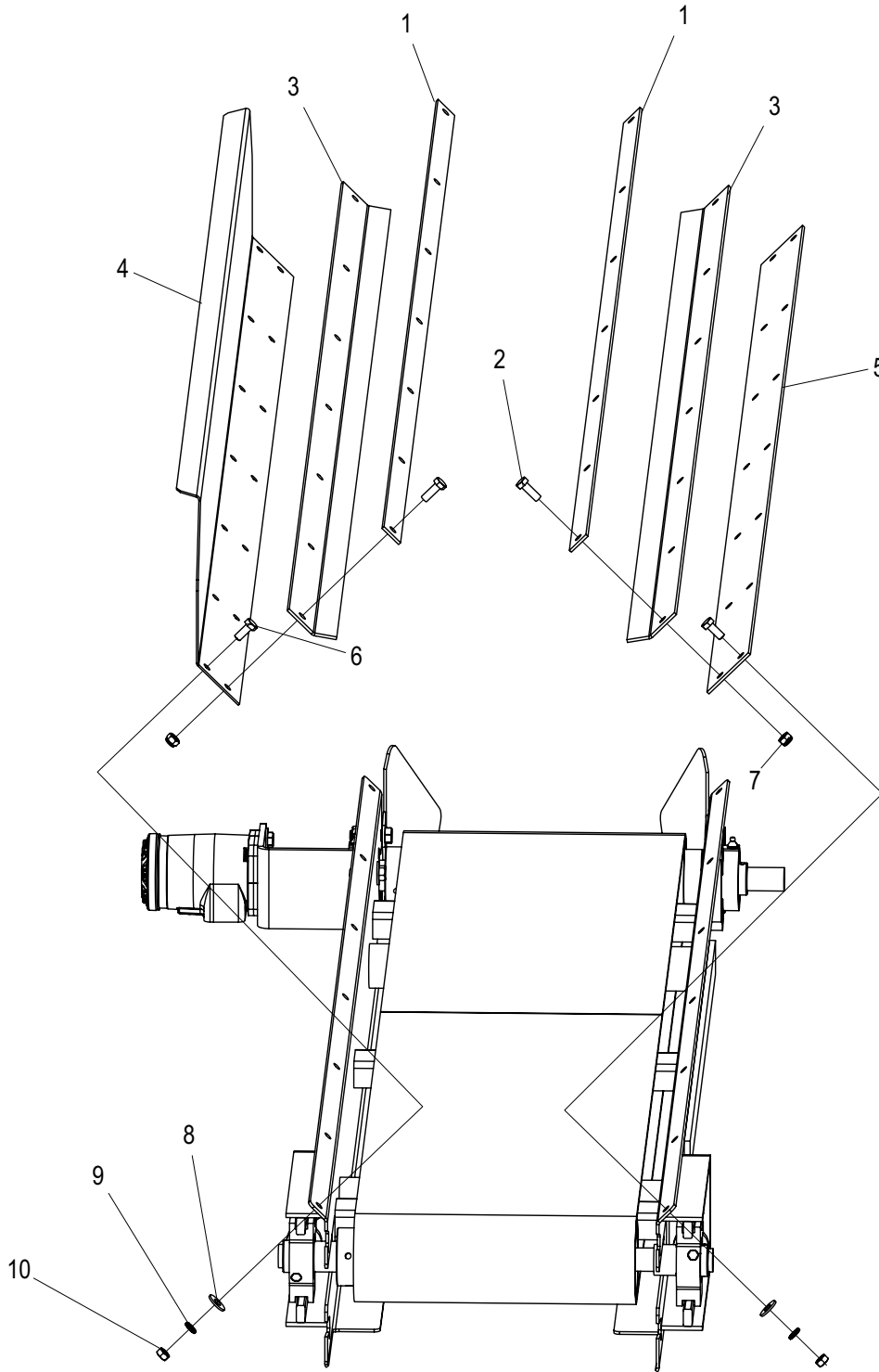
Cross Conveyor Assembly



BOM ID	Part #	Description
1	800374	12" x 129" Smooth Belt
2	800922	Floor Board
3	000151	3/8-16 x 1-1/2 Carriage Bolt
4	800563	Conveyor Pulley Spacer
5	800520	Conveyor Pulley Weldment
7	400115	1/4" x 1-1/4" Key
8	806106	1 Inch Take Up Bearing
9	000970	5/8-11 Hex Nut, Gr.5 Zinc
10	001076	5/8" Flat Washer
11	806139	5/8-11 All Thread x 7.875
12	001035	3/8" USS Flat Washer
13	000915	3/8" Hex Nut
14	800355	UHMW Wear Strip Angle
15	700053	Flange Bearing
16	000275	3/8-16 x 1-1/4 Hex Head Bolt, Gr.5 Zinc
17	001035	3/8" USS Flat Washer
18	000360	7/16-14 x 1-1/2" Hex Head Bolt
19	001045	7/16 USS Flat Washer Zinc
20	000830	7/16" Split Lock Washer
21	000935	7/16"-14 Hex Nut

BOM ID	Part #	Description
22	902017	Key, 1-1/4" x 1-1/2"
23	400113	Drive Shaft Coupler,-(w/ HOLE DRILLED)
24	000250	3/8" x 7/8" Hex Head Bolt
25	000820	3/8" Split Lock Washer
26	800244	Conveyor Motor Bracket
27	900863	.25 x 1 Half Moon Key
28	800046	101-1750 Eaton Motor
29	001035	3/8" USS Flat Washer
30	000820	3/8" Lock Washer
31	000915	3/8"-16 Hex Nut
32	800994	Conveyor Pulley Spacer
36	002999	5/16" - 18 Nylon Lock Nut
37	800947	Front Conveyor Chute Weldment
38	800913	Cross Conveyor Belt Scraper Rubber
39	800912	Cross Conveyor Belt Scraper, Rubber Hold Down
40	000119	5/16-18 x 7/8 Hex Head Bolt, Gr.5 Zinc
41	290010	6400-8-10
42	801371	93" Hose (8FJX - 8FJX)
43	801372	147" Hose (8FJX - 8FJX)
44	800341	Conveyor Weldment

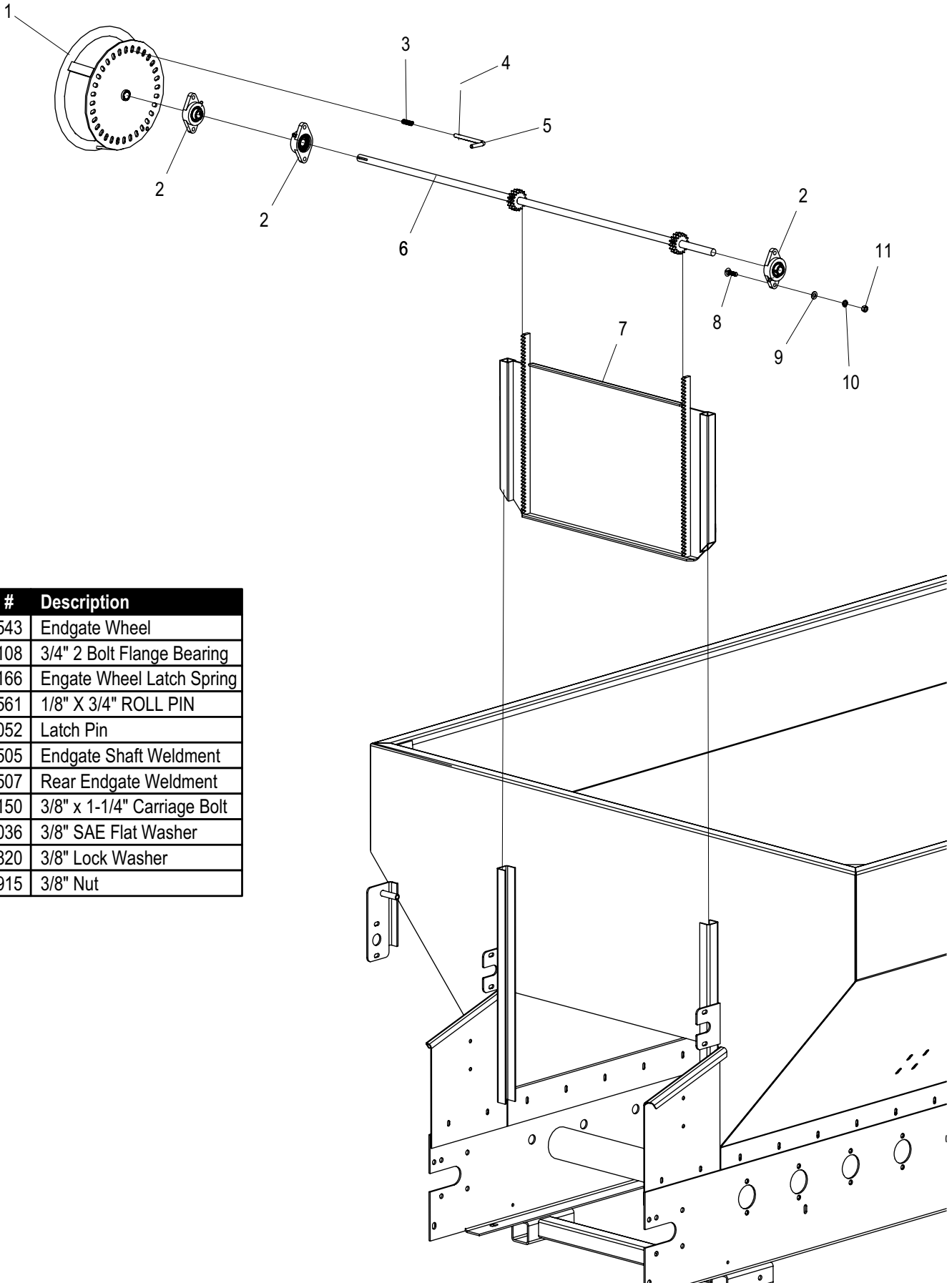
Cross Conveyor Rubber Skirt Assembly



BOM ID	Part #	Description
1	800407	Skirt Board Strip, Cross Conveyor
2	000119	5/16" x 7/8" HHB
3	800403	Cross Conveyor Rubber Skirt (.125" x 2.5" x 66")
4	801218	Cross Conveyor Baffle
5	800406	Cross Conveyor Skirt Board
6	010005	5/16 x 3/4 HH Bolt, Plated

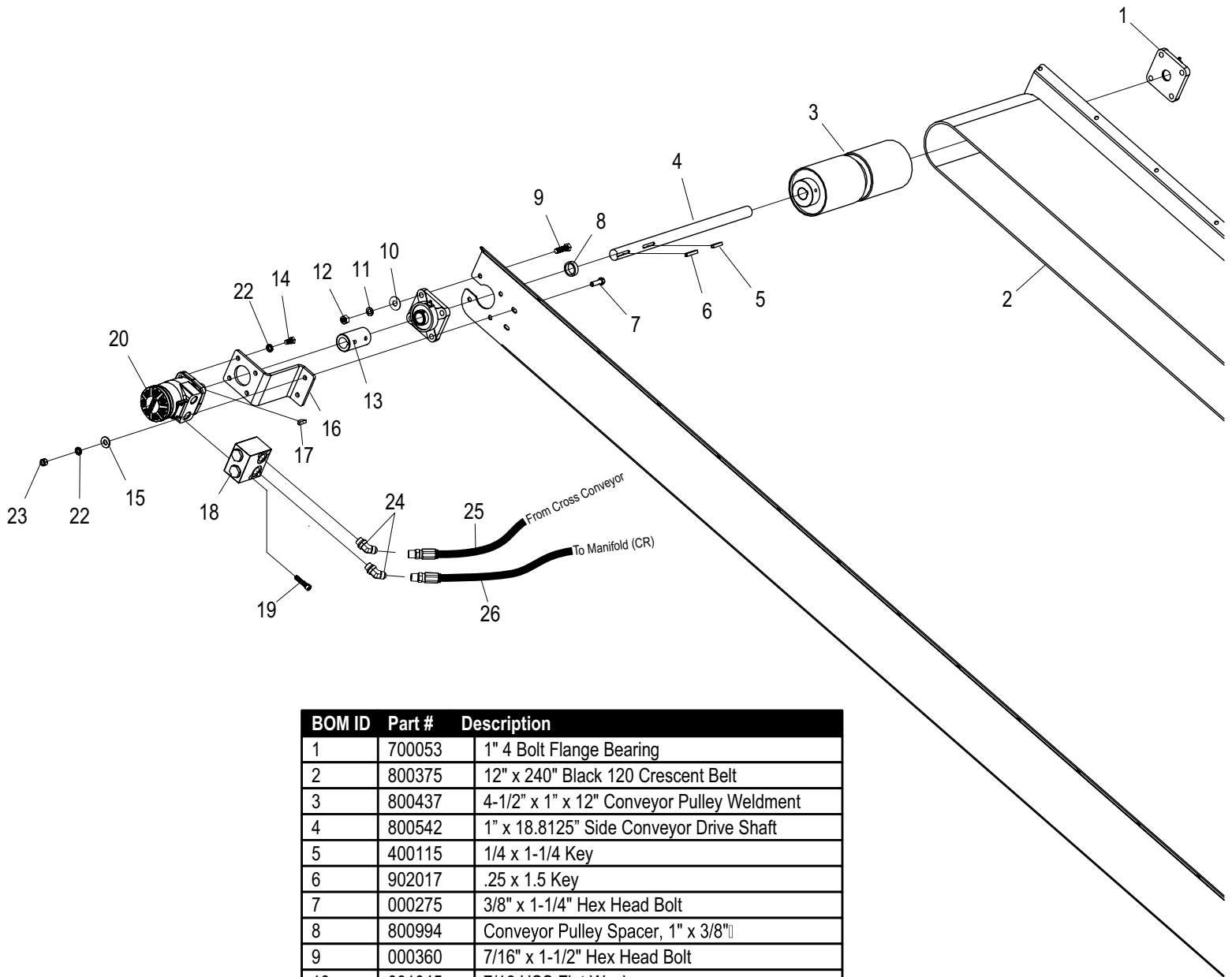
BOM ID	Part #	Description
7	002999	5/16-18 Nylon Lock Nut
8	001030	5/16 USS Flat Washer
9	000810	5/16 Lock Washer
10	000910	5/16-18 HH Nut Zinc

Rear Endgate Assembly



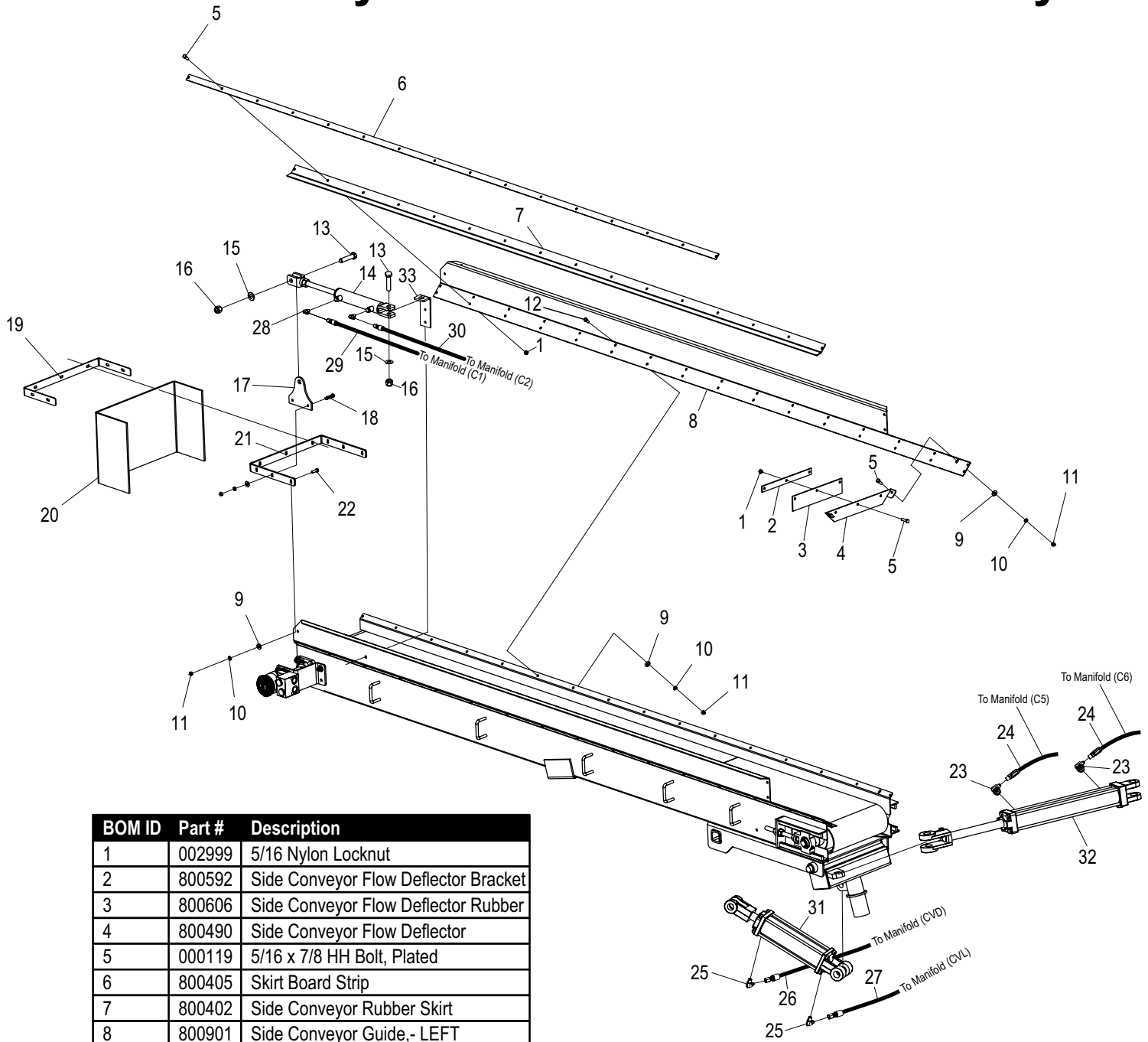
BOM ID	Part #	Description
1	830543	Endgate Wheel
2	806108	3/4" 2 Bolt Flange Bearing
3	806166	Engate Wheel Latch Spring
4	000561	1/8" X 3/4" ROLL PIN
5	806052	Latch Pin
6	800505	Endgate Shaft Weldment
7	800507	Rear Endgate Weldment
8	000150	3/8" x 1-1/4" Carriage Bolt
9	001036	3/8" SAE Flat Washer
10	000820	3/8" Lock Washer
11	000915	3/8" Nut

Side Conveyor Drive



BOM ID	Part #	Description
1	700053	1" 4 Bolt Flange Bearing
2	800375	12" x 240" Black 120 Crescent Belt
3	800437	4-1/2" x 1" x 12" Conveyor Pulley Weldment
4	800542	1" x 18.8125" Side Conveyor Drive Shaft
5	400115	1/4 x 1-1/4 Key
6	902017	.25 x 1.5 Key
7	000275	3/8" x 1-1/4" Hex Head Bolt
8	800994	Conveyor Pulley Spacer, 1" x 3/8"
9	000360	7/16" x 1-1/2" Hex Head Bolt
10	001045	7/16 USS Flat Washer
11	000830	7/16" Lock Washer
12	000935	7/16" Hex Nut
13	400113-00	Drive Shaft Coupler
14	000250	3/8" x 7/8" Hex Head Bolt
15	001035	3/8" Flat Washer
16	800244	Conveyor Motor Bracket
17	900863	1/4" x 1" Woodruff Key
18	800545	Side Conveyor Check Valve
19	000233	5/16" x 1-1/2" Socket Head Bolt
20	800413	101-1017 Eaton Motor
22	000820	3/8" Lock Washer
23	000915	3/8" Hex Nut
24	290037	45° Fitting, 8MJ x 8MB
25	801372	147" Hose, 8FJX - 8FJX (to Cross Conv.)
26	801373	215" Hose, 8FJX - 8FJX (to CR)

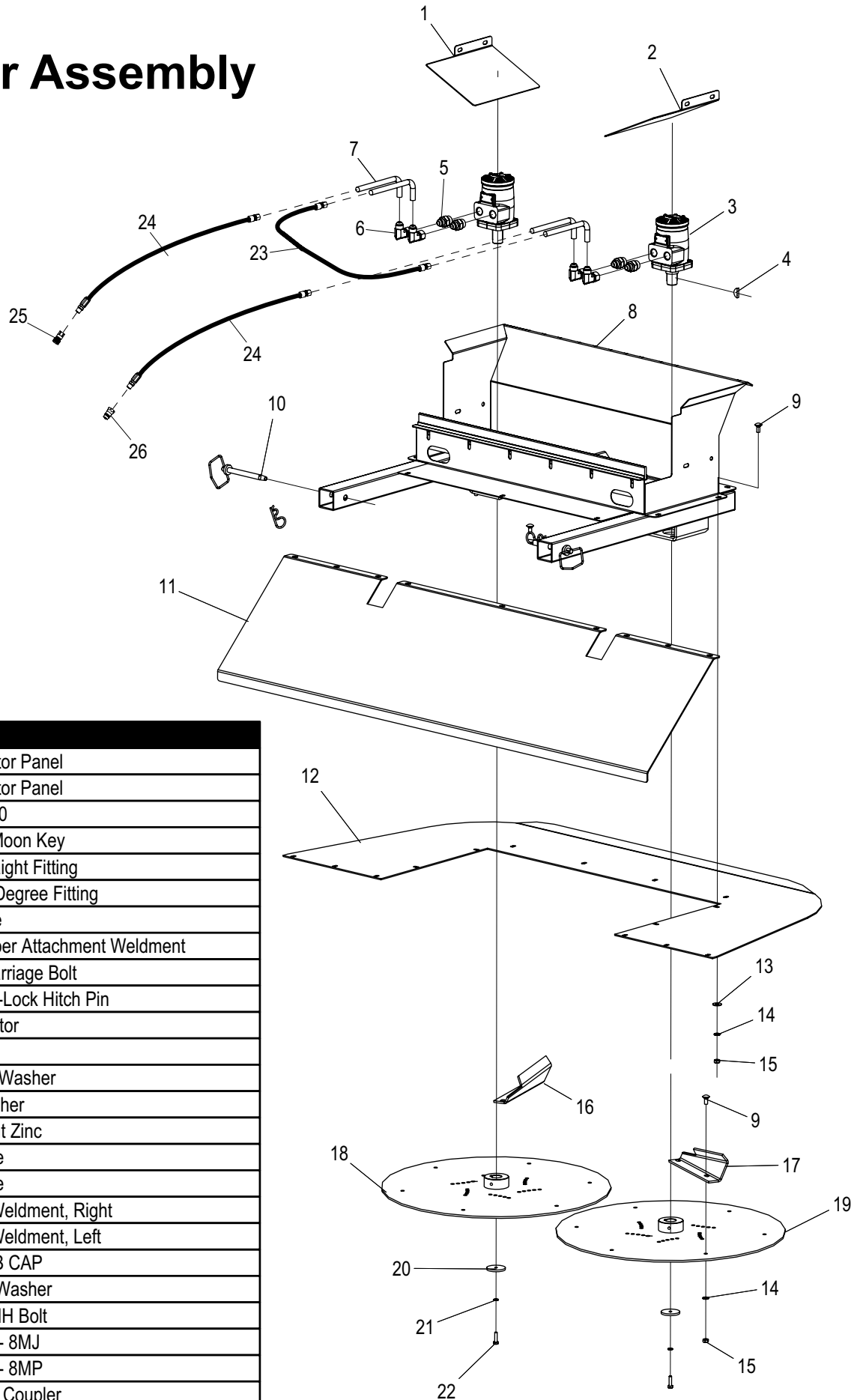
Side Conveyor Skirt and Chute Assembly



BOM ID	Part #	Description
1	002999	5/16 Nylon Locknut
2	800592	Side Conveyor Flow Deflector Bracket
3	800606	Side Conveyor Flow Deflector Rubber
4	800490	Side Conveyor Flow Deflector
5	000119	5/16 x 7/8 HH Bolt, Plated
6	800405	Skirt Board Strip
7	800402	Side Conveyor Rubber Skirt
8	800901	Side Conveyor Guide,- LEFT
9	001030	5/16 USS Flat Washer
10	000810	5/16 Lock Washer
11	000910	5/16-18 HH Nut Zinc
12	010005	5/16" x 3/4" HHB
13	000623	5/8" x 2-3/4" HHB
14	800415	1.5" x 6" Hydraulic Cylinder
15	001076	5/8" Flat Washer
16	000972	5/8" Nylon Locknut
17	800944	Chute Cylinder Mount - Rod End
18	000225	5/16-18 x 1 1/2 Hex Head Bolt
19	800591	Chute Bracket, Outer
20	800558	Chute Rubber
21	800555	Chute Bracket, Inner
22	000221	5/16 x 1 HH Bolt, Plated

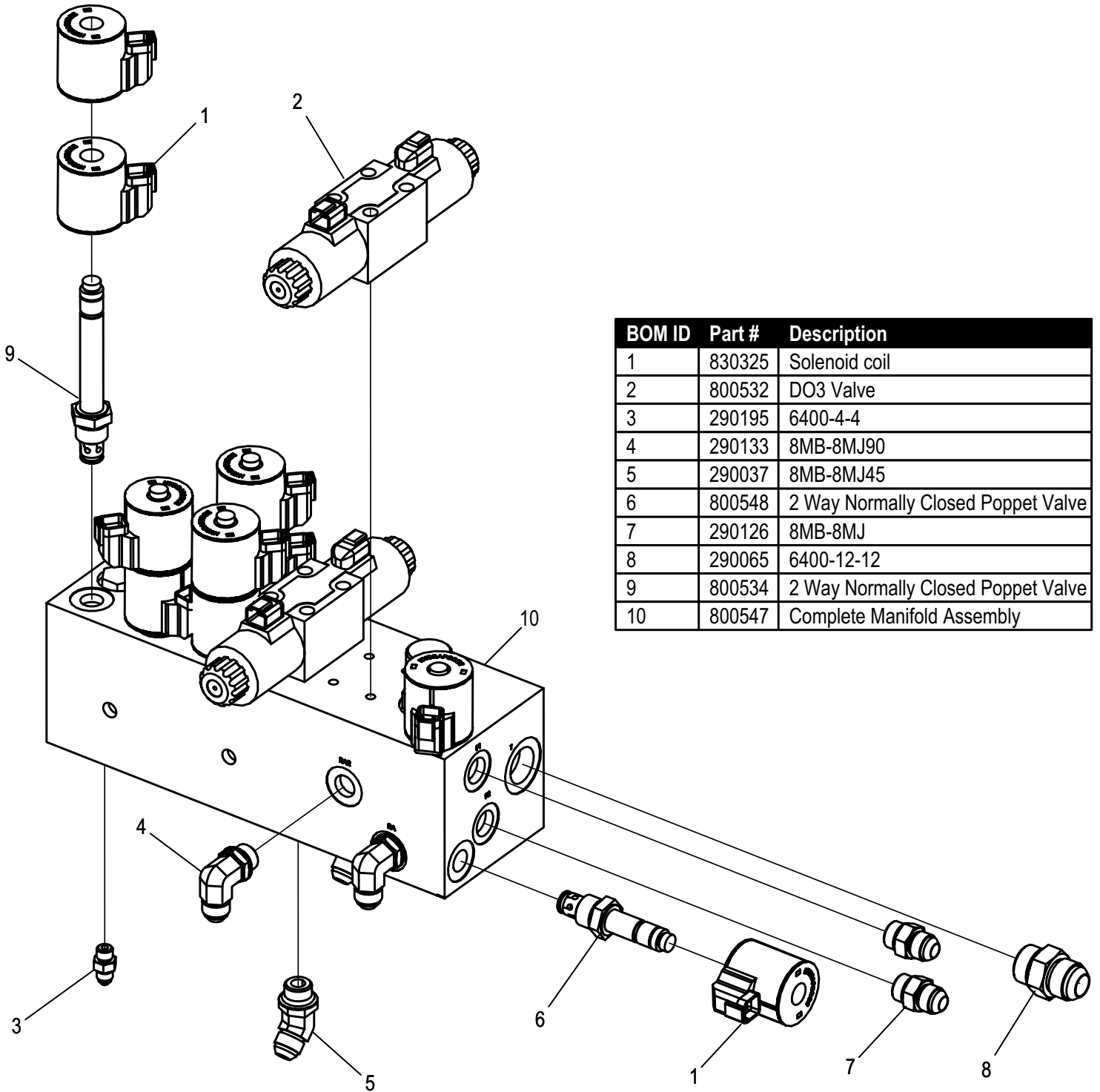
BOM ID	Part #	Description
23	290255	90° Fitting (4MJ - 8MB)
24	801381	84" Hose (4FJX45 - 4FJX)
25	101916	90° Fitting (4MJ - 6MP)
26	801382	104" Hose (4FJX45 - 4FJX)
27	801383	114" Hose (4FJX45 - 4FJX)
28	702459	90° Fitting (4MJ - 4MP)
29	801386	242" Hose (4FJX45 - 4FJX)
30	801387	236" Hose (4FJX45 - 4FJX)
31	800416	2.5" x 8" Cylinder
31SK	801408	Seal Kit for 2.5" x 8" Cylinder
32	800417	2" x 14" Cylinder
32SK	801409	Seal Kit for 2" x 14" Cylinder
33	800945	Cylinder Bracket

Spinner Assembly



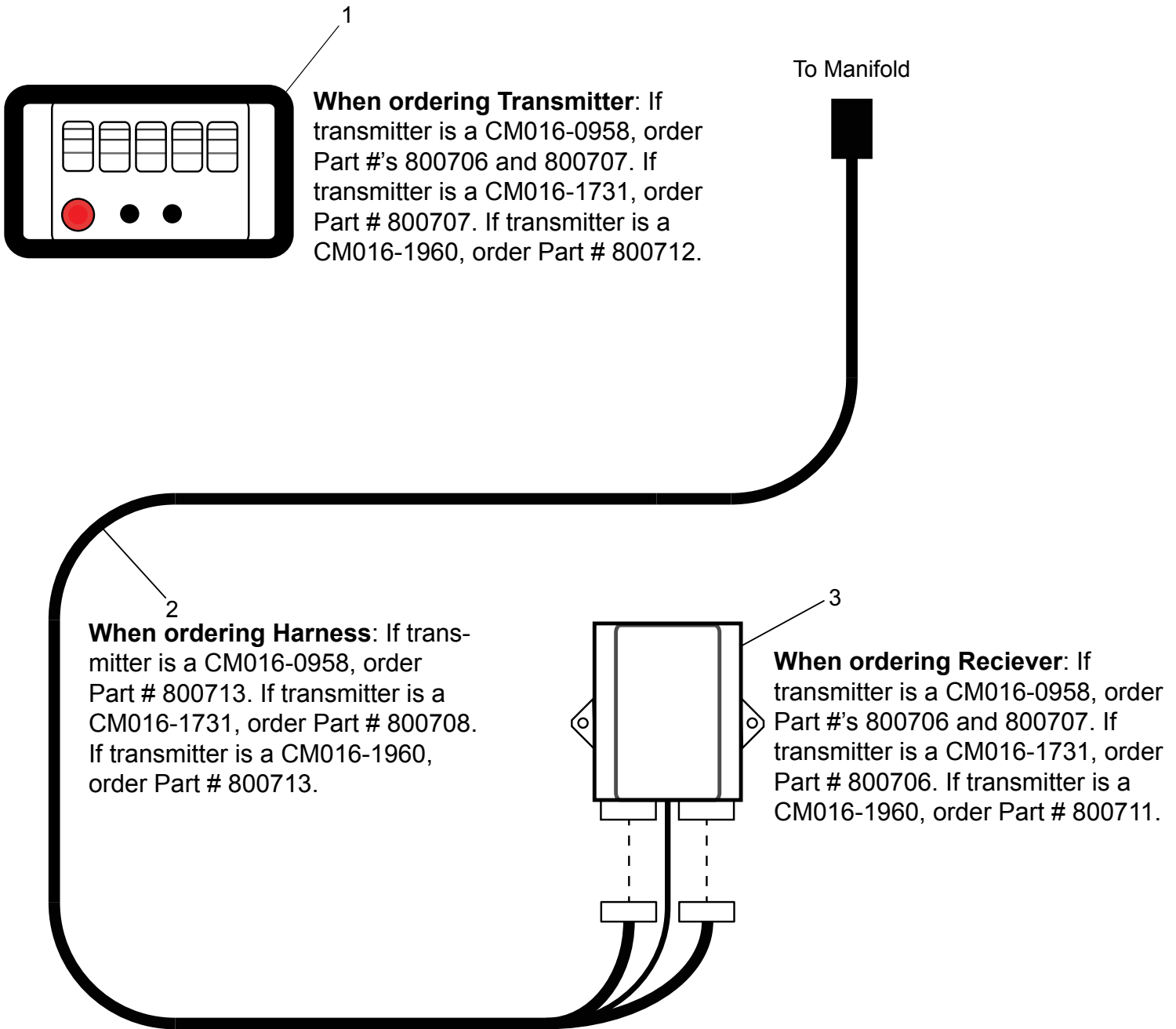
BOM ID	Part #	Description
1	800242	Hopper Deflector Panel
2	800243	Hopper Deflector Panel
3	800046	Motor 101-1750
4	900863	1/4" x 1" Half Moon Key
5	290010	6400-8-10 Straight Fitting
6	290049	8MJ-8FJX 90 Degree Fitting
7	806224	Hydraulic Tube
8	800920	Spinner - Hopper Attachment Weldment
9	000121	5/16" x 3/4" Carriage Bolt
10	100292	1/2 x 3-1/2 Pin-Lock Hitch Pin
11	800921	Spinner Deflector
12	800937	Spinner Shield
13	001030	5/16 USS Flat Washer
14	000810	5/16 Lock Washer
15	000910	5/16-18 HH Nut Zinc
16	800233	Spinner Paddle
17	800594	Spinner Paddle
18	800582	Spinner Disc Weldment, Right
19	800581	Spinner Disc Weldment, Left
20	800236	SPINNER HUB CAP
21	000805	1/4 Split Lock Washer
22	000182	1/4" - 20 x 1" HH Bolt
23	801375	38" Hose 8MJ - 8MJ
24	801374	28" Hose 8MJ - 8MP
25	290105	Male Ag Quick Coupler
26	290183	Female Ag Quick Coupler

Manifold and Fittings



BOM ID	Part #	Description
1	830325	Solenoid coil
2	800532	DO3 Valve
3	290195	6400-4-4
4	290133	8MB-8MJ90
5	290037	8MB-8MJ45
6	800548	2 Way Normally Closed Poppet Valve
7	290126	8MB-8MJ
8	290065	6400-12-12
9	800534	2 Way Normally Closed Poppet Valve
10	800547	Complete Manifold Assembly

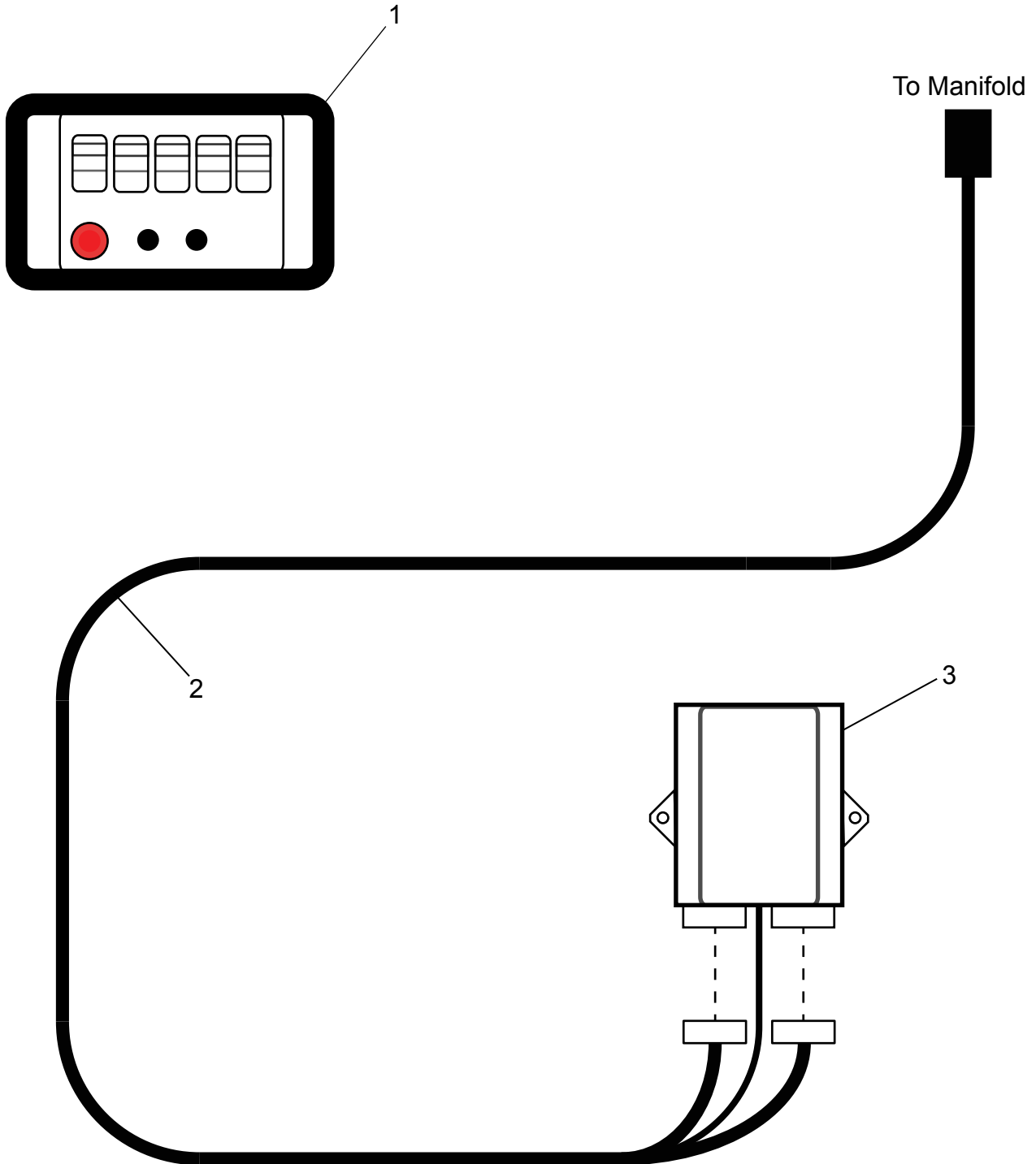
Transmitter/Receiver S/N -96095



Note: See next page for receiver wiring diagram.

Ref#	Description	Part#
1a	"Belly Pack" Transmitter	800707
2	Receiver Wire Harness	800708
3	1 to 16 Channel Receiver	800706
4	Tether	800710
5	Antenna	800709

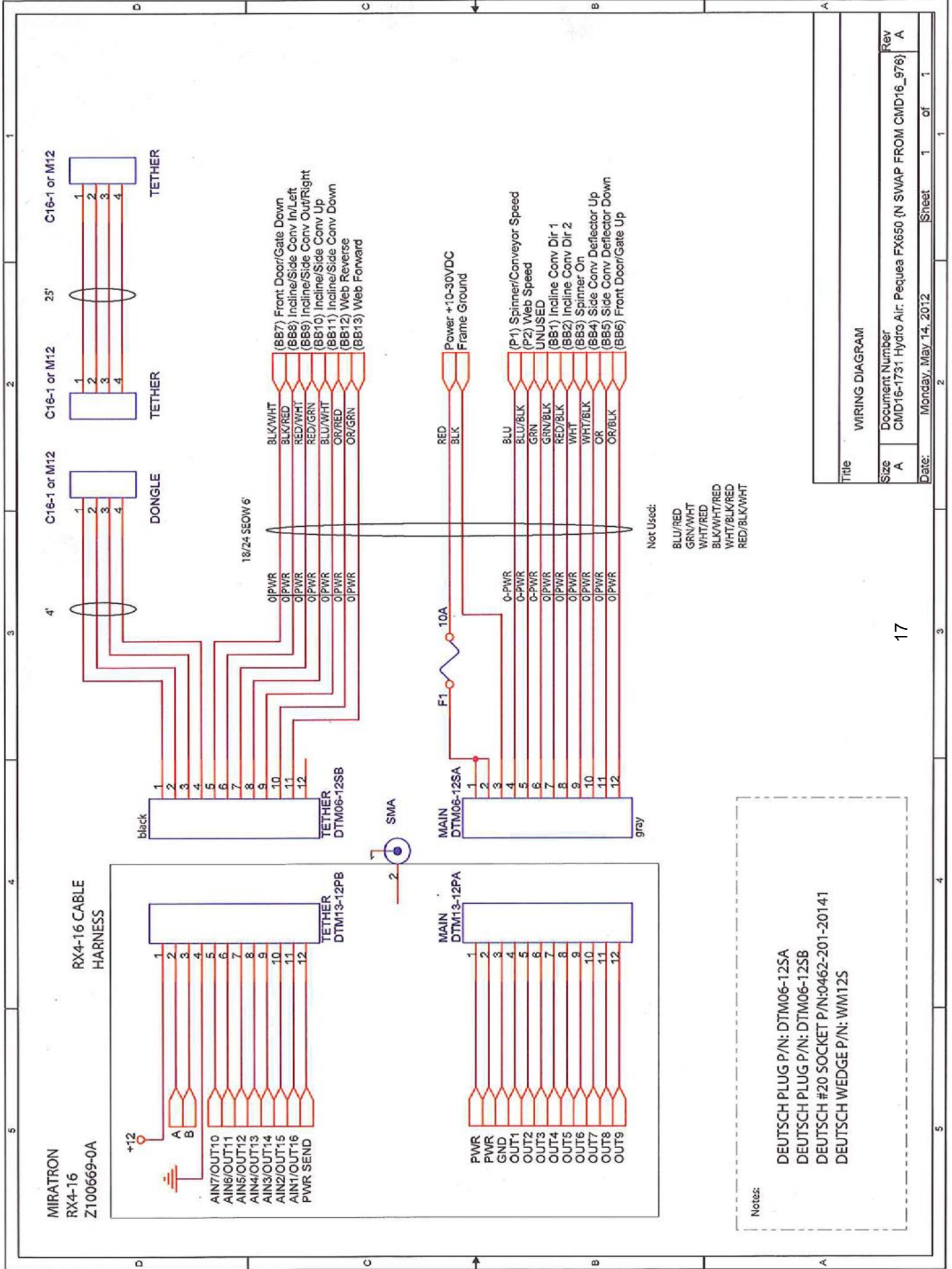
Transmitter/Receiver S/N 96095+



Note: See next page for receiver wiring diagram.

Ref#	Description	Part#
1a	"Belly Pack" Transmitter	801440
2	Receiver Wire Harness	801441
3	1 to 16 Channel Receiver	801442
4	Tether	800710
5	Antenna	800709

Wiring Diagram S/N -96095

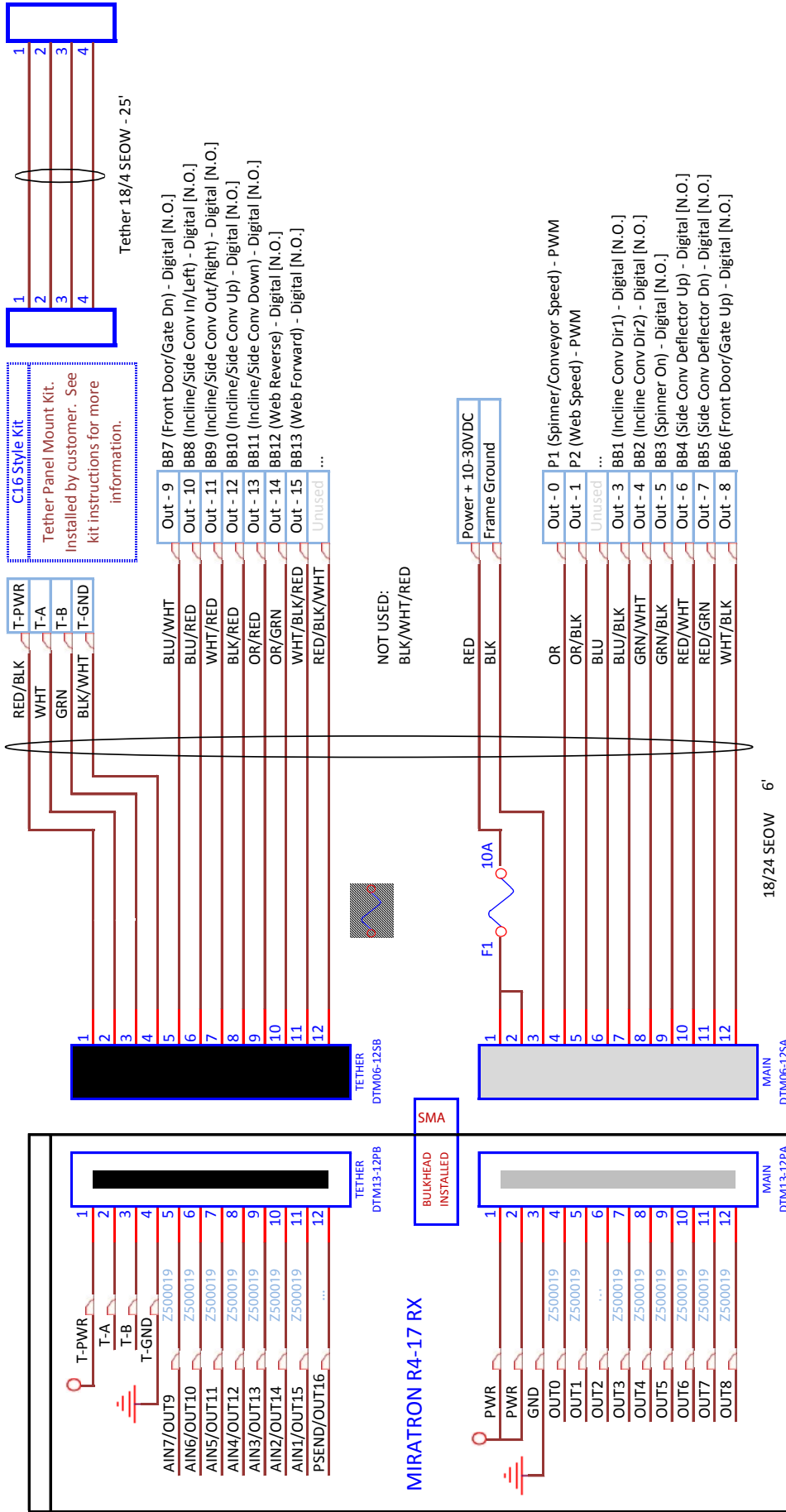


Notes:

DEUTSCH PLUG P/N: DTM06-12SA
 DEUTSCH PLUG P/N: DTM06-12SB
 DEUTSCH #20 SOCKET P/N:0462-201-20141
 DEUTSCH WEDGE P/N: WM12S

Title		WIRING DIAGRAM	
Size	A	Document Number	CMD16-1731 Hydro Air: Pequea FX650 (N SWAP FROM CMD16_976)
Rev	A	Date:	Monday, May 14, 2012
Sheet		1 of 1	

Wiring Diagram S/N -96095



Miratron Part Number	Z300110
Title	6' - R4P - 18AWG / 24C - Z300146 C16 Connector kit
Document Number	CMD16 11915 - Radio Swap of 1731
Date:	7/1/2016

Brake Controller Junction Box Wiring Diagram

