



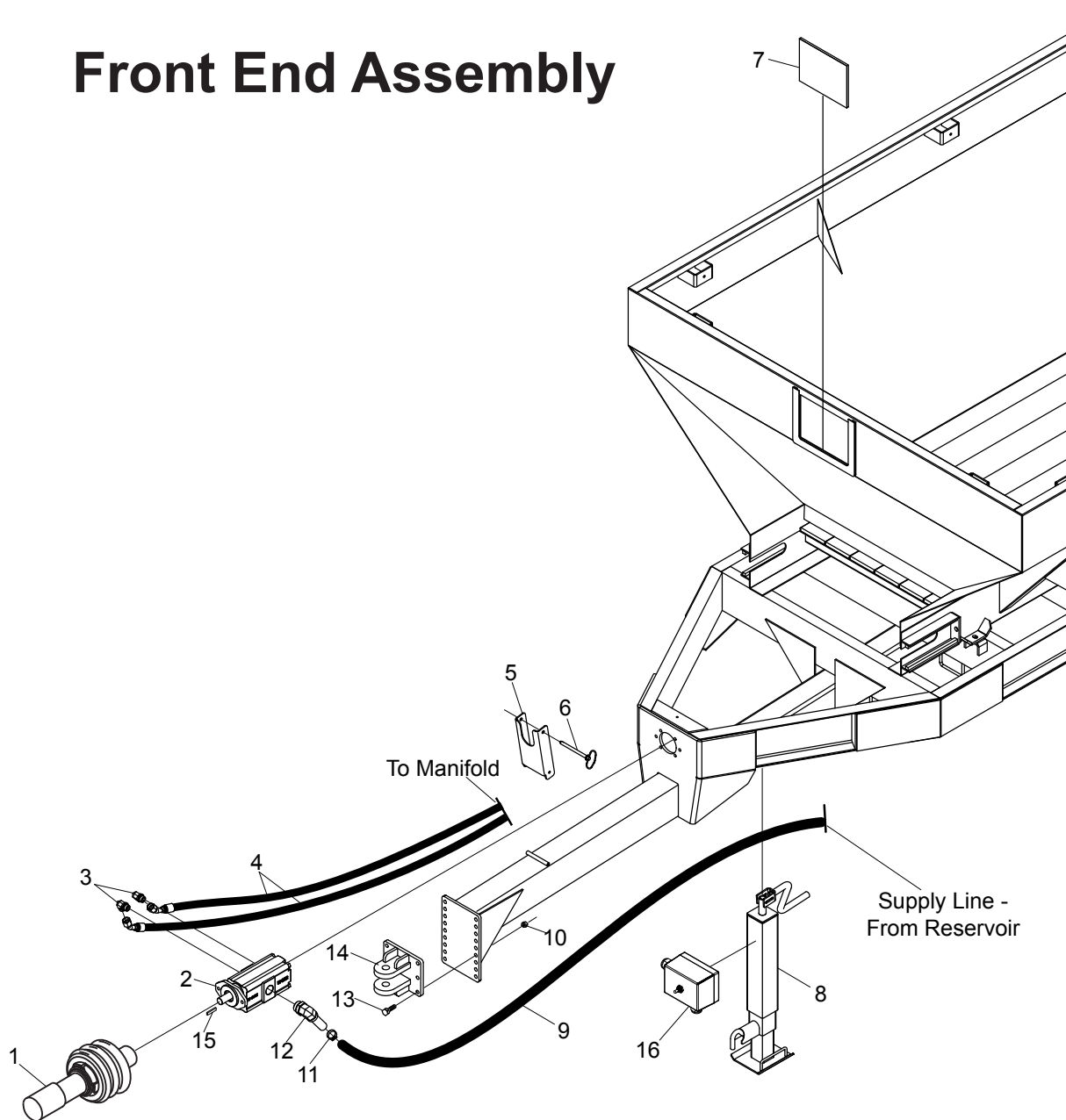
Litter Spreader

Models SP400, SP450, SP500, SP550

Illustrated Parts Breakdown

| | |
|---------|---|
| Page 1 | Front End |
| Page 2 | Hydraulic System (w/ Side Mounted Reservoir) |
| Page 3 | Hydraulic System (w/ Front Mounted Reservoir) |
| Page 4 | Hydraulic Manifold |
| Page 5 | Switch Box |
| Page 6 | Floor & Apron |
| Page 7 | Axle Assembly |
| Page 8 | Apron Drive |
| Page 9 | Gearbox Components S/N -95785 |
| Page 10 | Gearbox Components S/N 95785+ |
| Page 11 | Rear Gate |
| Page 12 | Spinner Assembly, S/N 84000-87550 |
| Page 13 | Spinner Assembly, S/N 87550+ |
| Page 14 | Fertilizer Package Option |
| Page 15 | Dual Web Drive Option |
| Page 16 | Heavy Duty Axle Option |
| Page 17 | Hydraulic Endgate Option |
| Page 18 | Ladder Option |
| Page 19 | Lighting Options |
| Page 20 | Mud Flap Option |
| Page 21 | Camera Option |

Front End Assembly

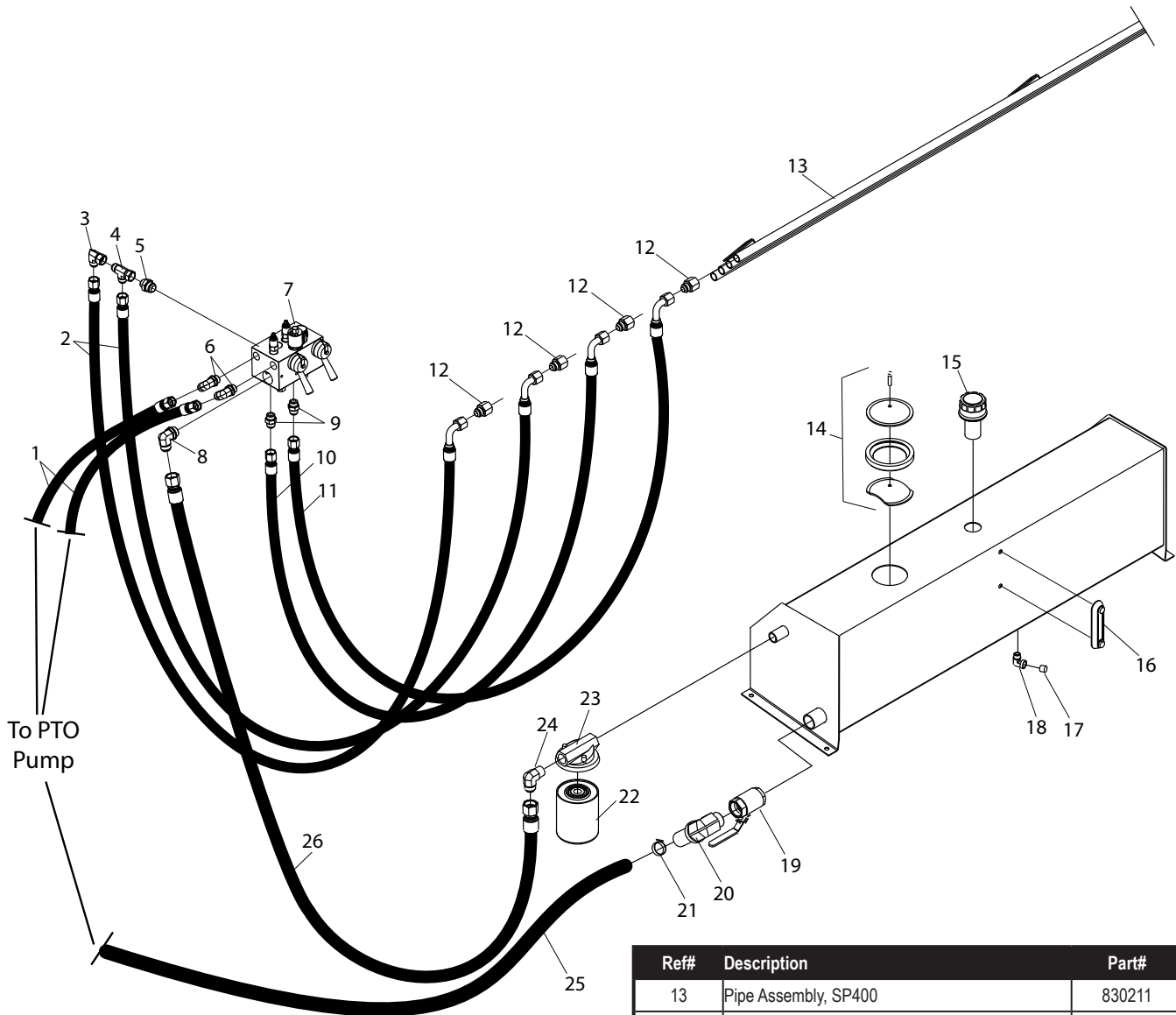


| Ref# | Description | Part# |
|------|--|----------|
| 1 | Complete PTO Shaft, 540 RPM | 830170 |
| | Complete PTO Shaft, 1000 RPM | 830241 |
| | Complete PTO shield kit without CV joint | 830628 |
| | Complete PTO Shaft with CV joint, 540 RPM | 830244 |
| | Complete PTO Shaft with CV joint, 1000 RPM | 830245 |
| | Complete PTO shield kit with CV joint | 830612 |
| 2 | PTO Pump, 1000RPM | 830164 |
| | Seal Kit for 1000 RPM Pump | 830347 |
| 2 | PTO Pump, 1000RPM | **830231 |
| 2 | PTO Pump, 540RPM | 830236 |
| | Seal kit for 540 RPM Pump | 830346 |
| 3 | Elbow Fitting, 12MJ x 12MB | 290022 |

**Used for Double Drive Option Only

| Ref# | Description | Part# |
|------|----------------------------|--------|
| 4 | 94" Hose Assembly | 830338 |
| 5 | PTO Stand | 830114 |
| 6 | 1/2 x 6-1/2 Hitch Pin | 830243 |
| 7 | Sight Window | 830319 |
| 8 | Drop Leg Jack | 100155 |
| 9 | 111" Suction Hose | 830340 |
| 10 | Hex Nut, 5/8 | 000970 |
| 11 | Hose Clamp | 290042 |
| 12 | Elbow Fitting, 24HB x 24MB | 290027 |
| 13 | Hex Bolt, 5/8 x 2-1/2 | 000620 |
| 14 | Bolt-on Hitch | 830056 |
| 15 | Pump Shaft Key | 830344 |
| 16 | Switchbox | 830242 |

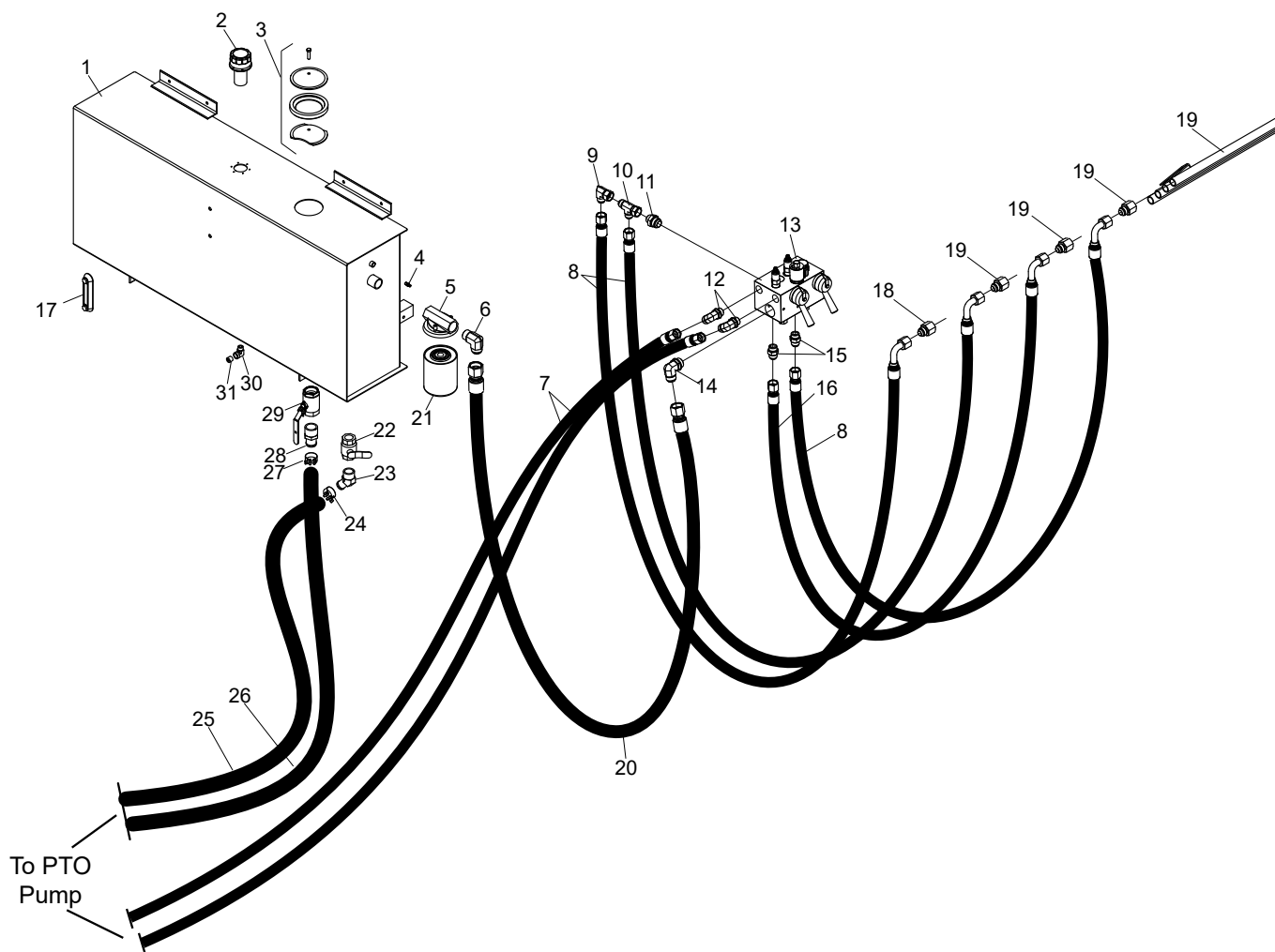
Hydraulics (w/ Side Mounted Reservoir)



| Ref# | Description | Part# |
|------|--------------------------------|--------|
| 1 | 94" Hose Assembly | 830338 |
| 2 | 27" Hose Assembly | 830336 |
| 3 | Elbow Fitting, 12MJ x 12FJX | 290150 |
| 4 | T-Fitting, 12MJ x 12FJX x 12MJ | 290034 |
| 5 | Straight Fitting 12MJ x 16MB | 290198 |
| 6 | Elbow Fitting, 12MJ x 12MB | 290022 |
| 7 | Manifold Assembly | 830150 |
| 8 | Elbow Fitting, 16MJ x 16MB | 290020 |
| 9 | Straight Fitting 12MJ x 12MB | 290065 |
| 10 | 29" Hose Assembly | 830337 |
| 11 | 27" Hose Assembly | 830336 |
| 12 | Straight Fitting, 12MJ x 12FP | 290019 |

| Ref# | Description | Part# |
|------|----------------------------|--------|
| 13 | Pipe Assembly, SP400 | 830211 |
| | Pipe Assembly, SP450 | 830143 |
| | Pipe Assembly, SP500 | 830220 |
| | Pipe Assembly, SP550 | 830229 |
| 14 | Door, Hydraulic Reservoir | 290044 |
| 15 | Breather Cap | 290142 |
| 16 | Hydraulic Sight Guage | 290054 |
| 17 | Pipe Plug | 290025 |
| 18 | Elbow Fitting, 8MP x 8FP | 290016 |
| 19 | Ball Valve | 290026 |
| 20 | Elbow Fitting, 24HB x 24MP | 290014 |
| 21 | Hose Clamp | 290042 |
| 22 | Oil Filter | 830116 |
| 23 | Filter Head | 830117 |
| 24 | Elbow Fitting, 16MJ x 16MP | 290023 |
| 25 | 111" Suction Hose | 830340 |
| 26 | 40" Hose Assembly | 830339 |

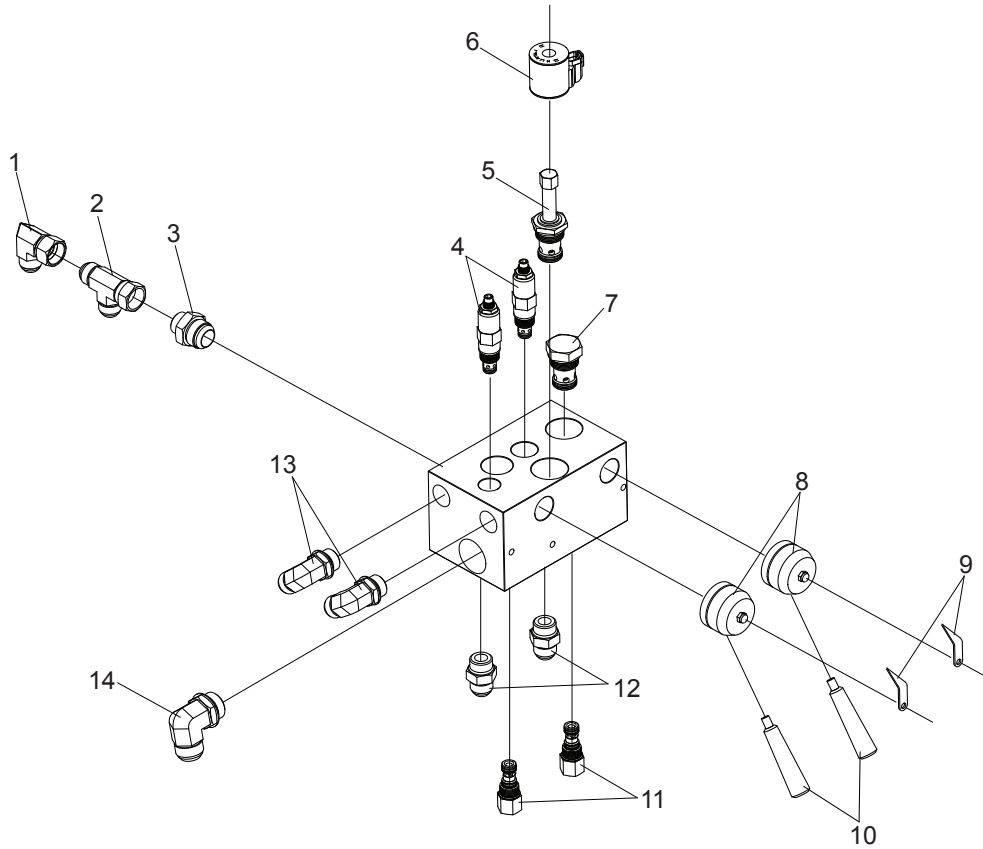
Hydraulics (w/ Front Mounted Reservoir)



| Ref# | Description | Part# |
|------|--------------------------------|--------|
| 1 | 60 Gallon Reservoir | 830249 |
| 2 | Breather Cap | 290142 |
| 3 | Door, Hydraulic Reservoir | 290044 |
| 4 | Push Lock Fitting | 290036 |
| 5 | Folter Head | 830361 |
| 6 | Elbow Fitting, 20MJ x 20MP | 830360 |
| 7 | 94" Hose Assembly | 830338 |
| 8 | 27" Hose Assembly | 830336 |
| 9 | Elbow Fitting, 12MJ x 12FJX | 290150 |
| 10 | T-Fitting, 12MJ x 12FJX x 12MJ | 290034 |
| 11 | Straight Fitting 12MJ x 16MB | 290198 |
| 12 | Elbow Fitting, 12MJ x 12MB | 290022 |
| 13 | Manifold Assembly | 830150 |
| 14 | Elbow Fitting, 16MJ x 16MB | 290020 |
| 15 | Straight Fitting 12MJ x 12MB | 290065 |
| 16 | 29" Hose Assembly | 830337 |
| 17 | Hydraulic Sight Guage | 290054 |
| 18 | Straight Fitting, 12MJ x 12FP | 290019 |

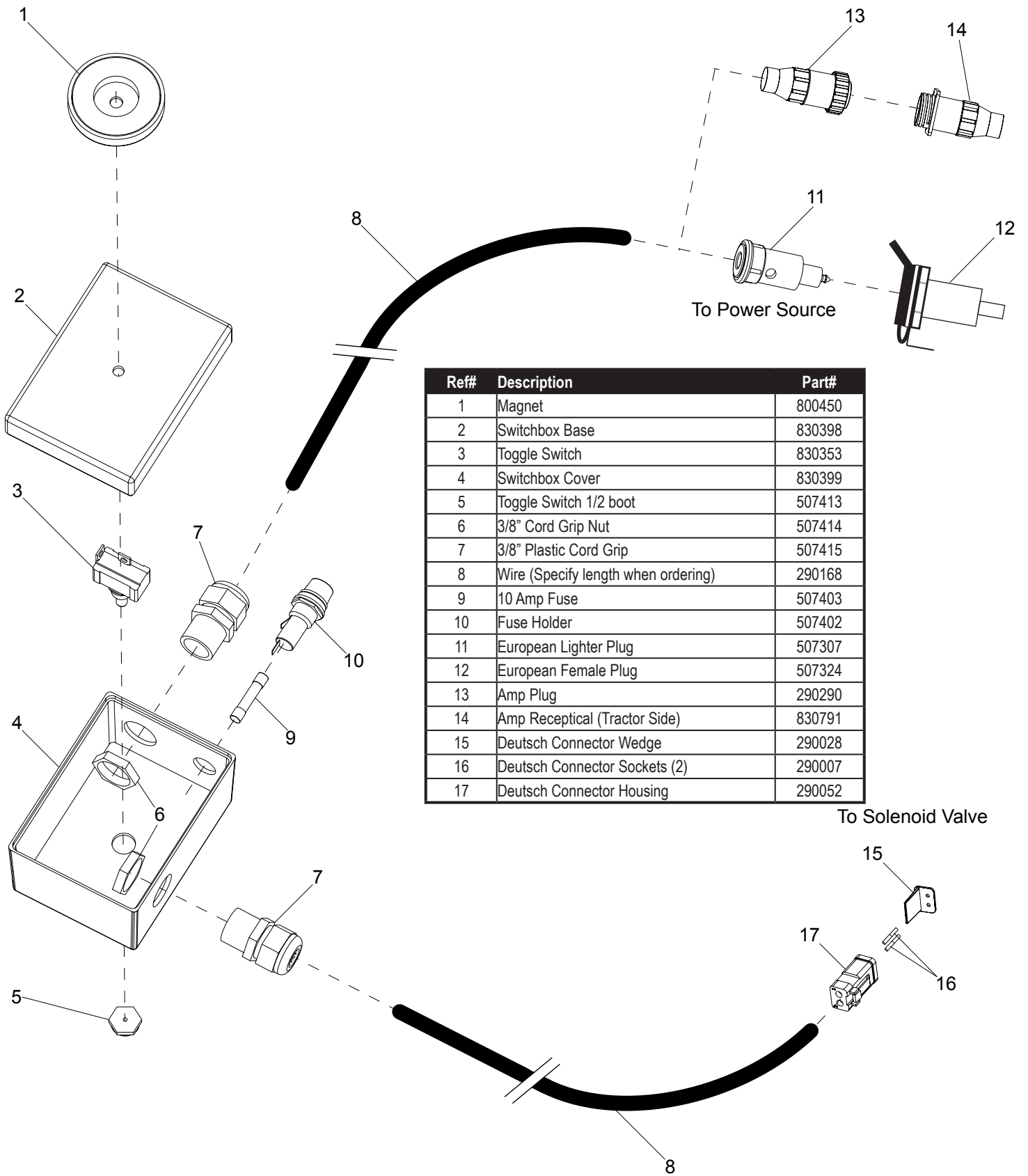
| Ref# | Description | Part# |
|------|-------------------------------|--------|
| 19 | Pipe Assembly, SP400 | 830211 |
| | Pipe Assembly, SP450 | 830143 |
| | Pipe Assembly, SP500 | 830220 |
| | Pipe Assembly, SP550 | 830229 |
| 20 | 100" Hose Assembly | 830362 |
| 21 | Elbow Fitting, 20MJ x 20MP | 830360 |
| 22 | 1-1/4" Ball Valve | 830355 |
| 23 | Elbow Fitting, 20HB x 20MP | 830356 |
| 24 | 1-1/4" Hose Clamp | 290169 |
| 25 | 46" x 1-1/4 Suction Hose | 830393 |
| 26 | 46" x 1-1/2 Suction Hose | 830394 |
| 27 | 1-1/2" Hose Clamp | 290042 |
| 28 | Straight Fitting, 24HB x 24MP | 830366 |
| 29 | 1-1/2" Ball Valve | 290026 |
| 30 | Elbow Fitting, 8MP x 8FP | 290016 |
| 31 | #8 Pipe Plug | 290025 |

Hydraulic Manifold

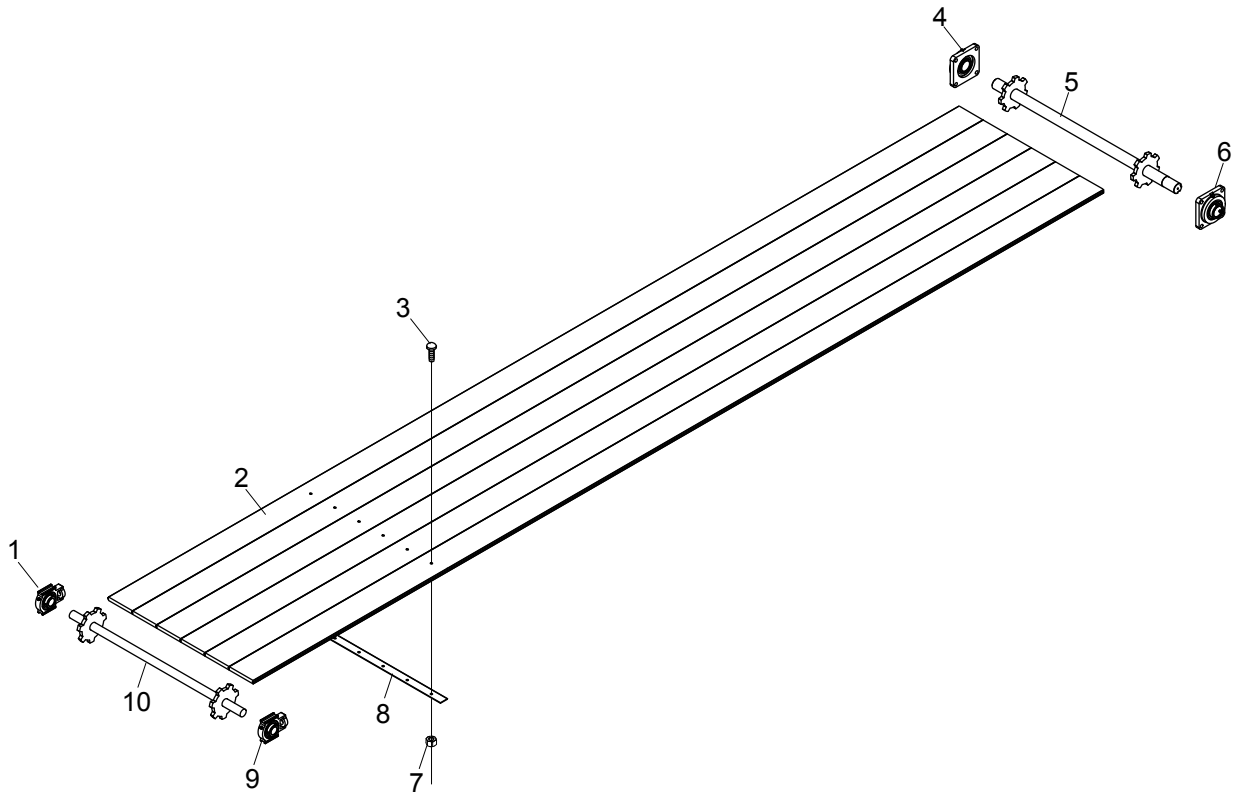


| Ref# | Description | Part# |
|------|---|--------|
| 1 | Elbow Fitting, 12MJ x 12FJX | 290150 |
| 2 | T-Fitting, 12MJ x 12FJX x 12MJ | 290034 |
| 3 | Straight Fitting, 12MJ x 16MB | 290198 |
| 4 | Relief Valve | 830322 |
| 5 | Solenoid Valve | 830320 |
| 6 | Coil, Solenoid Valve | 830325 |
| 7 | Check Valve | 830321 |
| 8 | Valve w/ Handle | 830324 |
| 9 | Valve Indicator | 830136 |
| 10 | Valve Handle | 830162 |
| 11 | Directional Valve | 806140 |
| 12 | Straight Fitting, 12MJ x 12MB | 290065 |
| 13 | Elbow Fitting, 12MJ x 12MB | 290022 |
| 14a | Sing Web Drive Elbow Fitting, 16MJ x 16MB | 290020 |
| 14b | Double Web Drive Elbox Fitting, 20MJ x 16MB | 830259 |

Switchbox



Floor & Apron



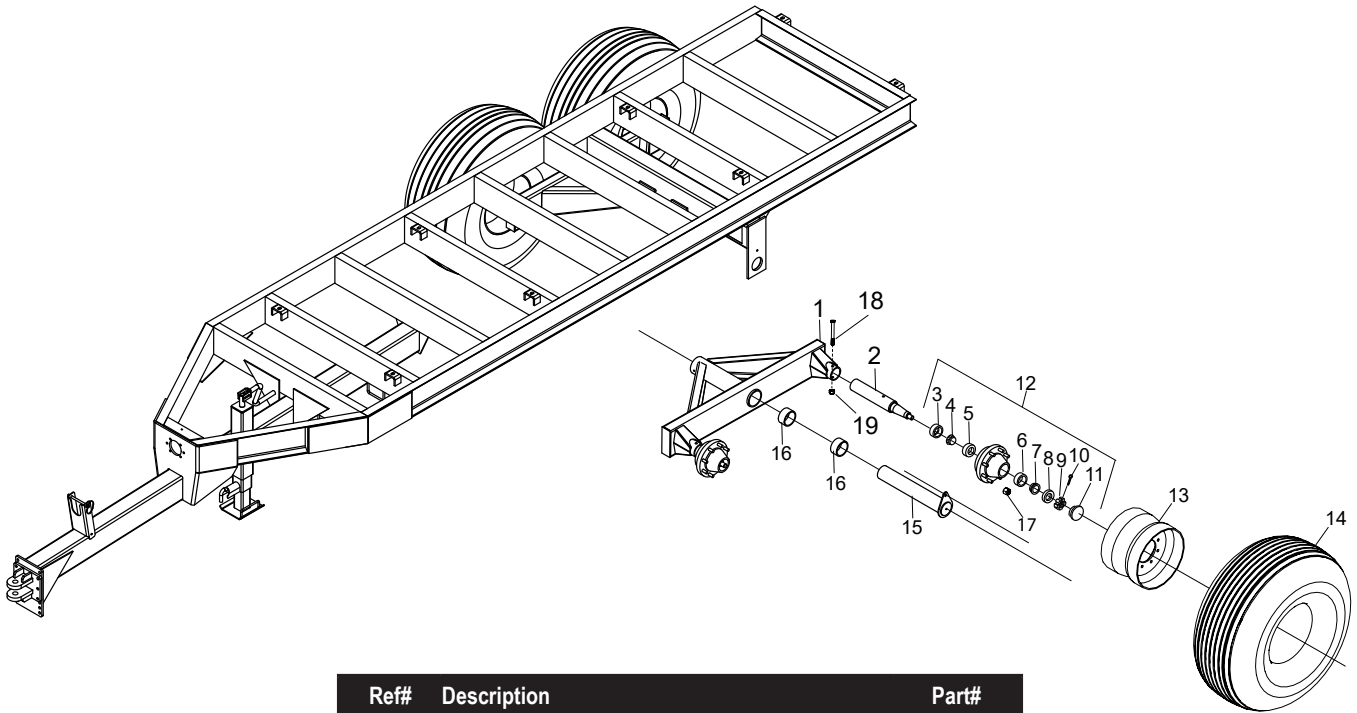
| Ref# | Description | Part# |
|------|----------------------------------|--------|
| 1 | Sliding Bearing | 801099 |
| 2 | 189" Poly Floor Board, SP400 | 830599 |
| | 213" Poly Floor Board, SP450 | 830156 |
| | 237" Poly Floor Board, SP500 | 830232 |
| | 261-1/2" Poly Floor Board, SP550 | 830233 |
| 3 | Carriage Bolt, 3/8" x 1-1/2" | 000151 |
| 4 | 4-Bolt Flange Bearing | 801100 |
| 5 | Apron Shaft, Rear | 830037 |
| 6 | 4-Bolt Flange Bearing | 801100 |

| Ref# | Description | Part# |
|------|--|--------|
| 7 | Hex Nut, 3/8" | 000915 |
| 8 | Floor Hold Down Strip | 830168 |
| 8 | Floor Hold Down Strip | 830168 |
| 9 | Sliding Bearing | 801099 |
| 10 | Apron Shaft, Front | 830124 |
| 11 | 3/4"-10 Hex Nut | 000975 |
| 12 | 3/4" SAE Flat Washer | 001086 |
| 13 | 3/4"-10 All Thread x 8.875" | 801175 |
| 14a | 10' Section of Web Slat, Slat every 3rd Link | 830172 |
| 14b | 10' Section of Web Slat, Slat every Other Link | 830214 |

Length of Web Slat Required

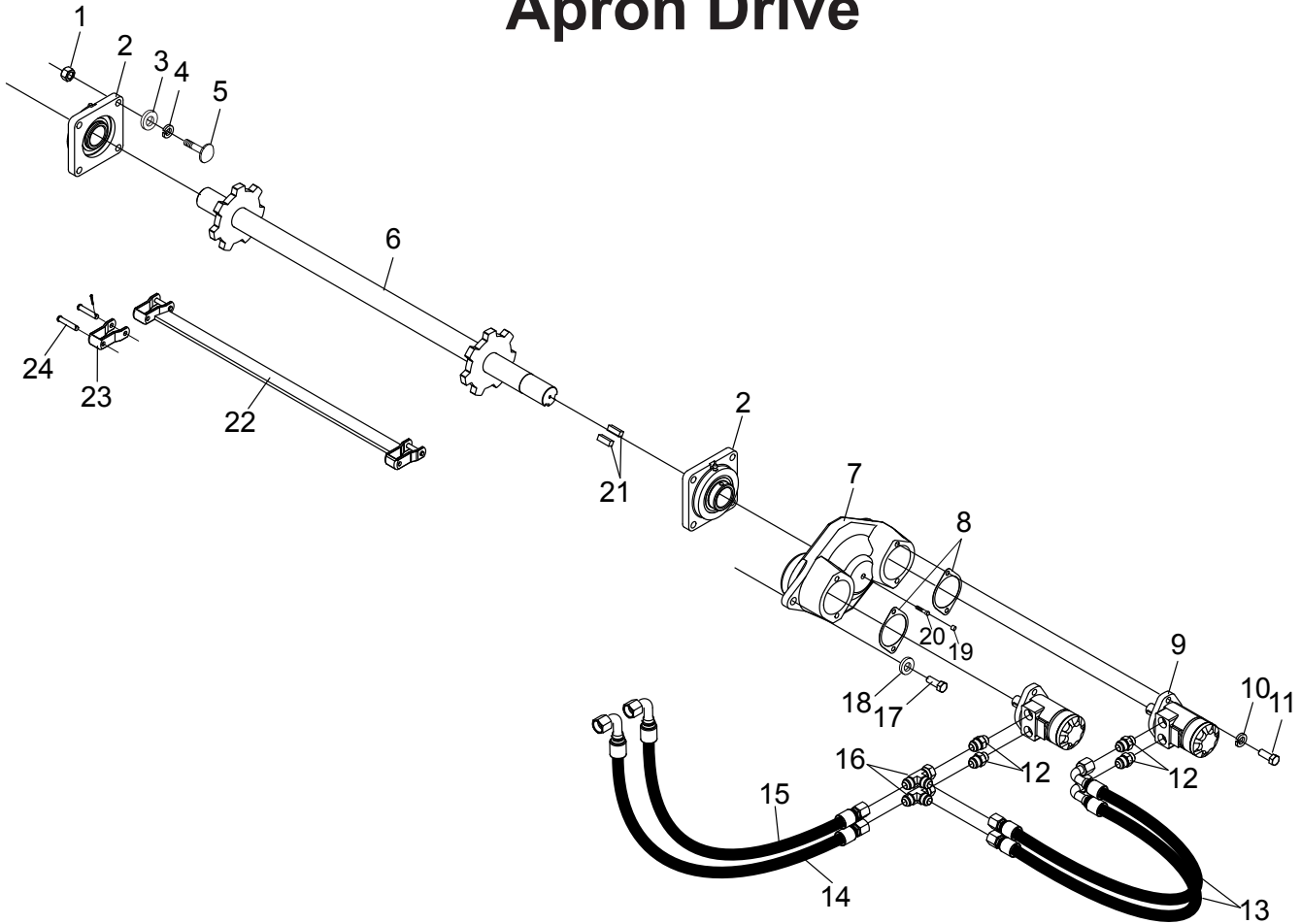
| | |
|-------|-----|
| SP400 | 34' |
| SP450 | 38' |
| SP500 | 42' |
| SP550 | 46' |

Axle Assembly



| Ref# | Description | Part# |
|------|---|--------|
| 1 | Walking Beam Weld Assembly | 830010 |
| 2 | Spindle | 830044 |
| 3 | Grease Seal | 300431 |
| 4 | Bearing 387AS | 300430 |
| 5 | Race, 382A | 101428 |
| 6 | Race, LM501310 | 300247 |
| 7 | Bearing, LM501349 | 300248 |
| 8 | Spindle Washer | 890585 |
| 9 | Spindle Nut | 300275 |
| 10 | Cotter Pin, 1/4 x 2-1/4 | 001231 |
| 11 | Dust Cap | 300249 |
| 12 | Complete Hub | 830045 |
| 13a | 8 Bolt Wheel, 16.1" x 14" -Cream | 830235 |
| 13b | 8 Bolt Wheel, 16.1" x 16" -Silver | 830047 |
| 14a | 16.5L x 16.1 Tire | 830234 |
| 14b | 19L x 16.1 Tire | 830050 |
| 14c | 21.5L x 16.1 x 10 Ply Tire | 830258 |
| 15 | Pivot Pin | 830042 |
| 16 | Bronze Bushing | 702340 |
| 17 | Lug Nut, - 1288 Hub (5/8" Fine) | 300278 |
| 18 | 1/2"-13 x 4 1/2" Hex Head Grade 5 Zinc Bolt | 000500 |
| 19 | 1/2"-13 Nylon Insert Grade 5 Zinc Nut | 000950 |

Apron Drive



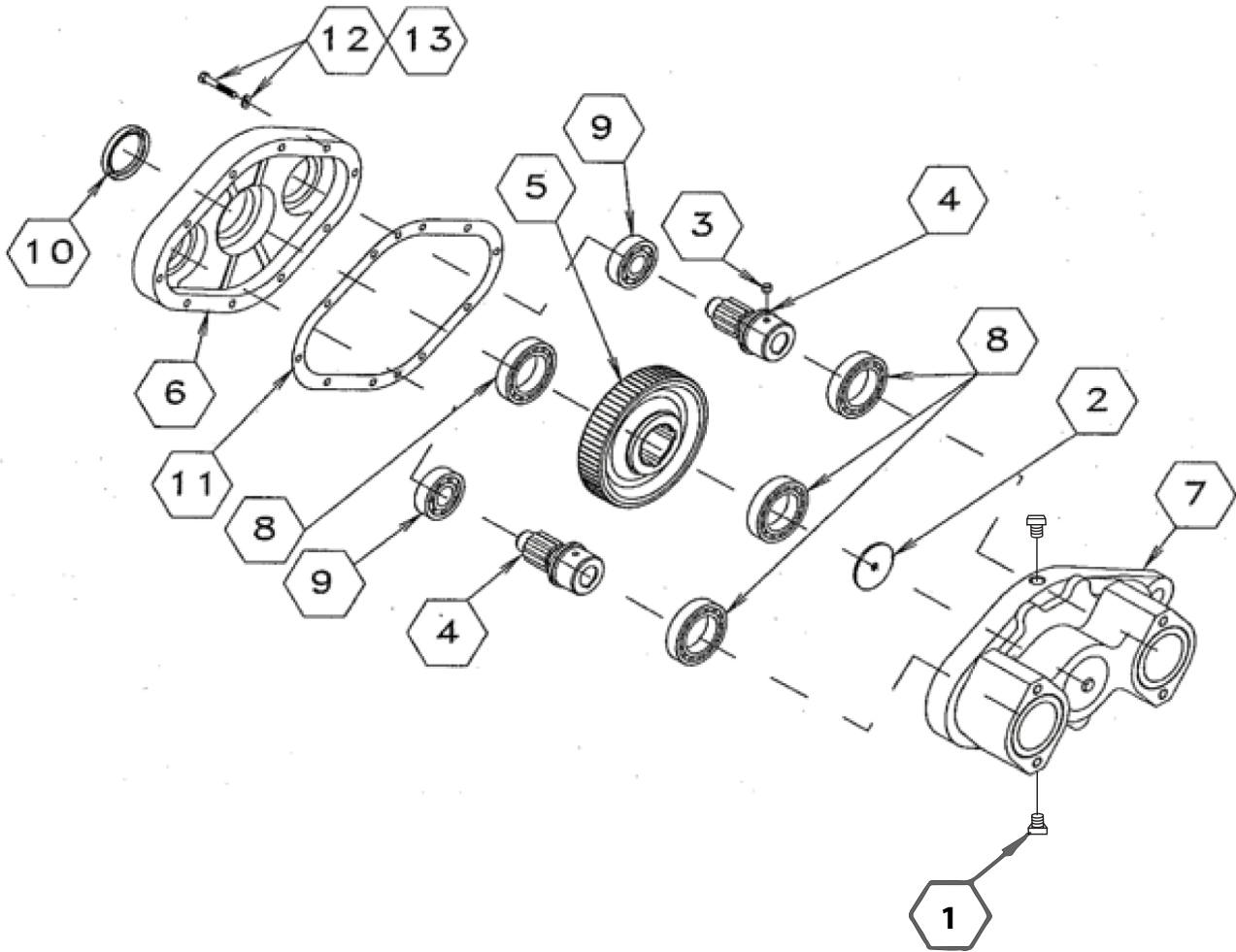
*Note: Double Drive Gearbox (ID 7) was changed at serial number 95785. Old gearbox (801098) is no longer available and will be substituted with new gearbox (801418). Limited Parts are available for old gearbox.

| Ref# | Description | Part# |
|------|--------------------------|--------|
| 1 | Hex Nut, 5/8 | 000970 |
| 2 | 4-Bolt Flange Bearing | 801100 |
| 3 | USS Flat Washer, 5/8 | 001075 |
| 4 | Split Lock Washer, 5/8 | 000860 |
| 5 | Carriage Bolt, 5/8 x 2 | 000617 |
| 6 | Rear Web Shaft | 830037 |
| 7 | Double Drive Gearbox | 801418 |
| | Shaft Seal for Gearbox | 800136 |
| 8 | Gasket | 830251 |
| 9 | Drive Motor (101-1037) | 830171 |
| | Seal Kit for Drive Motor | 800135 |
| 10 | Split Lock Washer, 1/2 | 000840 |
| 11 | Hex Bolt, 1/2 x 1-1/2 | 000435 |

| Ref# | Description | Part# |
|------|--------------------------------|--------|
| 12 | Straight Fitting, 12MJ x 10MB | 290001 |
| 13 | 25" Hose Assembly | 830333 |
| 14 | 25" Hose Assembly | 830335 |
| 15 | 27" Hose Assembly | 830334 |
| 16 | T-Fitting, 12MJ x 12FJX x 12MJ | 290034 |
| 17 | Hex Bolt, 5/8 x 2 | 000615 |
| 18 | USS Flat Washer, 5/8 | 001075 |
| 19 | Plug, 1/2" NPT | 290025 |
| 20 | Socket Head Bolt, 5/16 x 1-1/4 | 000231 |
| 21 | Key, 1/2 x 1/2 x 1-1/2 | 830329 |
| 22 | Slat Assembly | 830327 |
| 23 | Connector Link w/ Pin | 830326 |
| 24 | Connector Pin | 830328 |

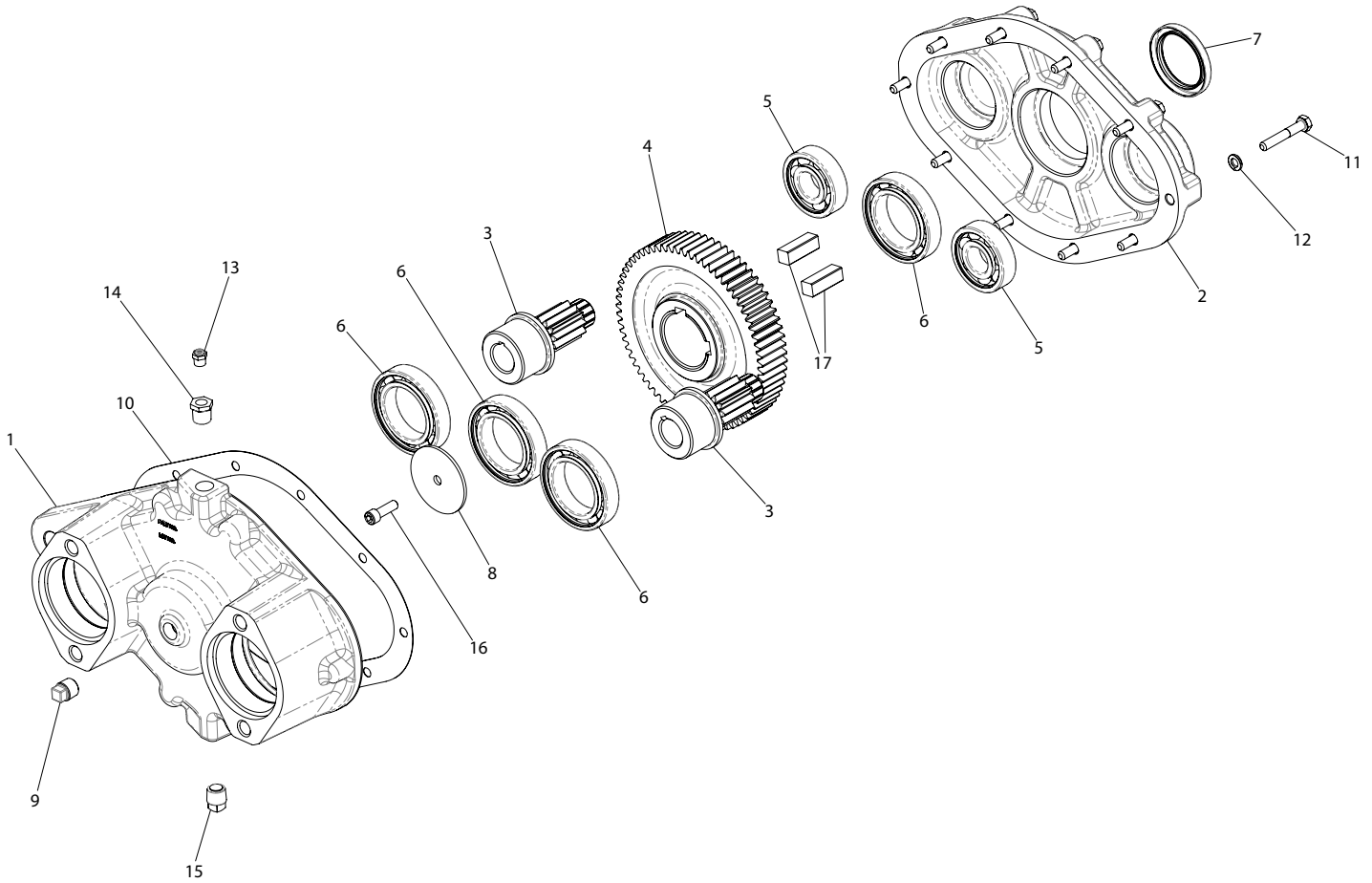
Gearbox Components S/N -95785

*Limited Parts Available. Can substitute complete gearbox with Part # 801418



| Ref# | Description | Part# |
|------|------------------|--------|
| 1 | Plugs and Keys | 830700 |
| 2 | Washer | 830701 |
| 3 | Plug-Delrin | 830702 |
| 4 | Gear-Pinion | 830703 |
| 5 | Gear-Driven | 830704 |
| 6 | Housing-Inboard | 830705 |
| 7 | Housing-Outboard | 830706 |
| 8 | Bearing | 830707 |
| 9 | Bearing | 830708 |
| 10 | Oil Seal | 800136 |
| 11 | Gasket | 830709 |
| 12 | Lock Washer | 000810 |
| 13 | Capscrew | 000122 |

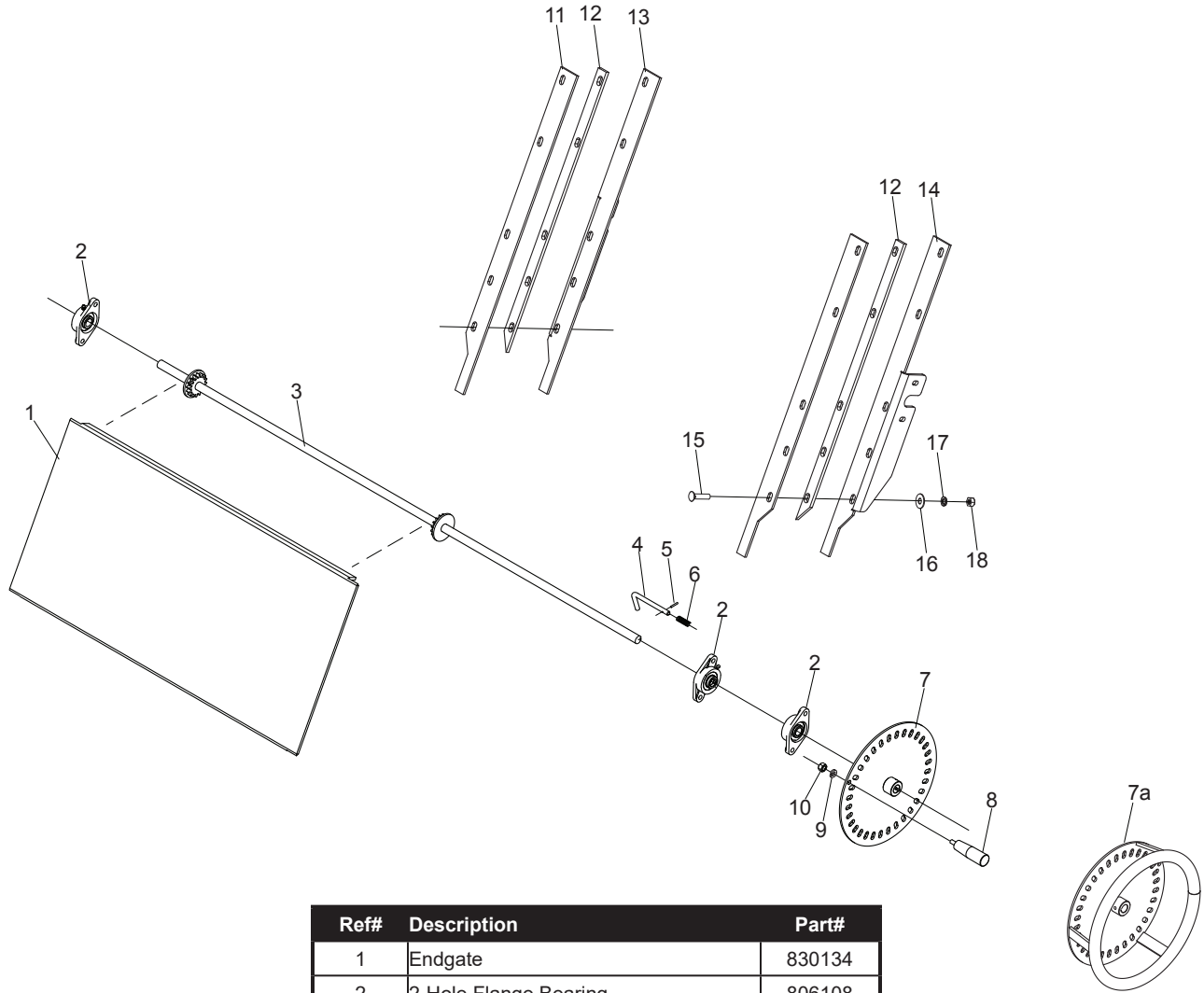
Gearbox Components S/N 95785+



| Ref# | Description | Part# |
|------|---------------------------------|--------|
| 1 | Outer Housing | 801435 |
| 2 | Inner Housing | 801436 |
| 3 | 11 Tooth Spur Gear | 801422 |
| 4 | 67 Tooth Spur Gear | 801423 |
| 5 | 6305 C3 Ball Bearing | 801424 |
| 6 | 6010 C3 Ball Bearing | 801425 |
| 7 | 1.969-2.627-.312 | 801437 |
| 8 | 2.50 x .34 x .120 Washer | 801427 |
| 9 | 3/8" NPT Square Head Plug w/ 3M | 801428 |

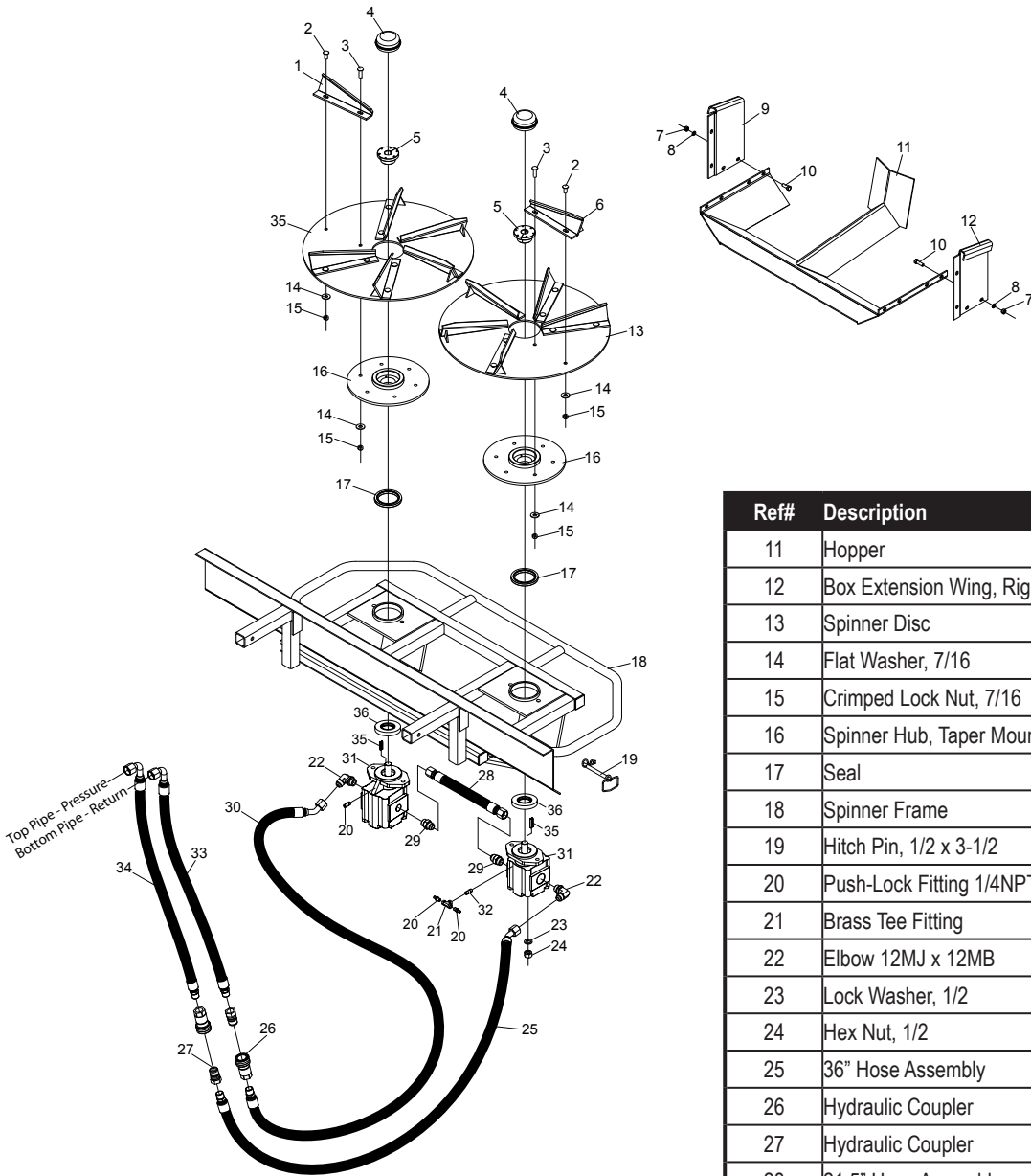
| Ref# | Description | Part# |
|------|---------------------------------|--------|
| 10 | IP39 Gasket | 801438 |
| 11 | 5/16" x 2" Hex Head Bolt, Gr. 8 | 000122 |
| 12 | 5/16" Lock Washer | 000810 |
| 13 | 1/8" NPT Vent Plug, 5 PSI | 801430 |
| 14 | 3/8" NPT x 1/8" NPT Bushing | 801431 |
| 15 | 3/8" NPT MAG Square Head Plug | 801432 |
| 16 | 5/16" x 1" Gr. 8 Bolt | 401434 |
| 17 | 1/2" x 1/2" x 1-1/2" Key | 801439 |
| 18 | Complete Gearbox | 801418 |

Rear Gate



| Ref# | Description | Part# |
|------|-------------------------------|--------|
| 1 | Endgate | 830134 |
| 2 | 2-Hole Flange Bearing | 806108 |
| 3 | Endgate Shaft | 830109 |
| 4 | Latch Pin | 806052 |
| 5 | Roll Pin, 1/8 x 3/4 | 000561 |
| 6 | Endgate Latch Spring | 806166 |
| 7 | Endgate Wheel | 806131 |
| 7a | Endgate Wheel (S/N 85800+) | 830543 |
| 8 | Endgate Wheel Handle | 806099 |
| 9 | Lock Washer, 5/16 | 000810 |
| 10 | Hex Nut, 5/16 | 000910 |
| 11 | Inner Endgate Track, Bolt-on | 830072 |
| 12 | Endgate Track Spacer | 830075 |
| 13 | Outer Endgate Track, Right | 830088 |
| 14 | Outer Endgate Track, Left | 830592 |
| 15 | 7/16-14 x 1-3/4 Carriage Bolt | 000363 |
| 16 | 7/16 USS Flat Washer Zinc | 001045 |
| 17 | 7/16 Split Lock Washer Zinc | 000830 |
| 18 | 7/16-14 Hex Nut, Gr.5 Zinc | 000935 |

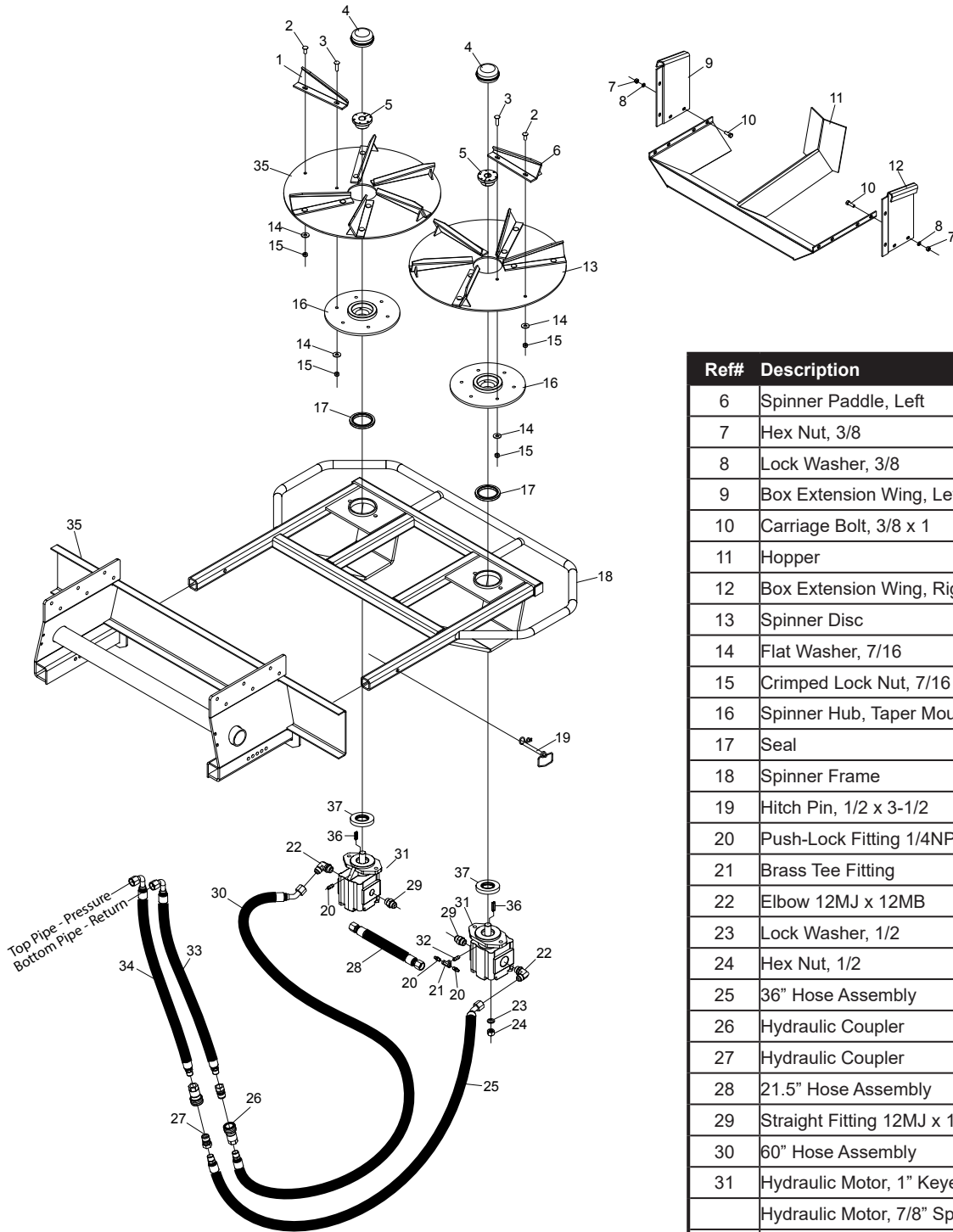
Spinner Assembly, 84000-87550



| Ref# | Description | Part# |
|------|-------------------------------|--------|
| 1 | Spinner Paddle, Right | 830265 |
| 2 | Carriage Bolt, 7/16 x 1 | 000356 |
| 3 | Carriage Bolt, 7/16 x 1-1/2 | 000359 |
| 4 | Cap | 830314 |
| 5 | Tapered Bushing, 1" Round | 505420 |
| | Tapered Bushing, 7/8" Splined | 830351 |
| 6 | Spinner Paddle, Left | 830267 |
| 7 | Hex Nut, 3/8 | 000915 |
| 8 | Lock Washer, 3/8 | 000820 |
| 9 | Box Extension Wing, Left | 830144 |
| 10 | Carriage Bolt, 3/8 x 1 | 000125 |

| Ref# | Description | Part# |
|------|-------------------------------------|--------|
| 11 | Hopper | 830147 |
| 12 | Box Extension Wing, Right | 830079 |
| 13 | Spinner Disc | 830309 |
| 14 | Flat Washer, 7/16 | 001045 |
| 15 | Crimped Lock Nut, 7/16 | 000387 |
| 16 | Spinner Hub, Taper Mount | 830313 |
| 17 | Seal | 830317 |
| 18 | Spinner Frame | 830165 |
| 19 | Hitch Pin, 1/2 x 3-1/2 | 100292 |
| 20 | Push-Lock Fitting 1/4NPT | 290036 |
| 21 | Brass Tee Fitting | 290033 |
| 22 | Elbow 12MJ x 12MB | 290022 |
| 23 | Lock Washer, 1/2 | 000840 |
| 24 | Hex Nut, 1/2 | 000940 |
| 25 | 36" Hose Assembly | 830331 |
| 26 | Hydraulic Coupler | 290041 |
| 27 | Hydraulic Coupler | 290040 |
| 28 | 21.5" Hose Assembly | 830330 |
| 29 | Straight Fitting 12MJ x 12MB | 290065 |
| 30 | 60" Hose Assembly | 830332 |
| 31 | Hydraulic Motor, 1" Keyed Shaft | 830318 |
| | Hydraulic Motor, 7/8" Splined Shaft | 830153 |
| | Seal Kit for Motor | 830345 |
| | Replacement 1" Key Shaft | 830391 |
| | Replacement 7/8"-13 Splined Shaft | 830710 |
| 32 | Brass Nipple | 290039 |
| 33 | 20" Hose Assembly | 830341 |
| 34 | 25" Hose Assembly | 830342 |
| 35 | 1/4" x 3/8" x 1-1/4" Key | 830390 |
| 36 | Outer Seal | 830389 |

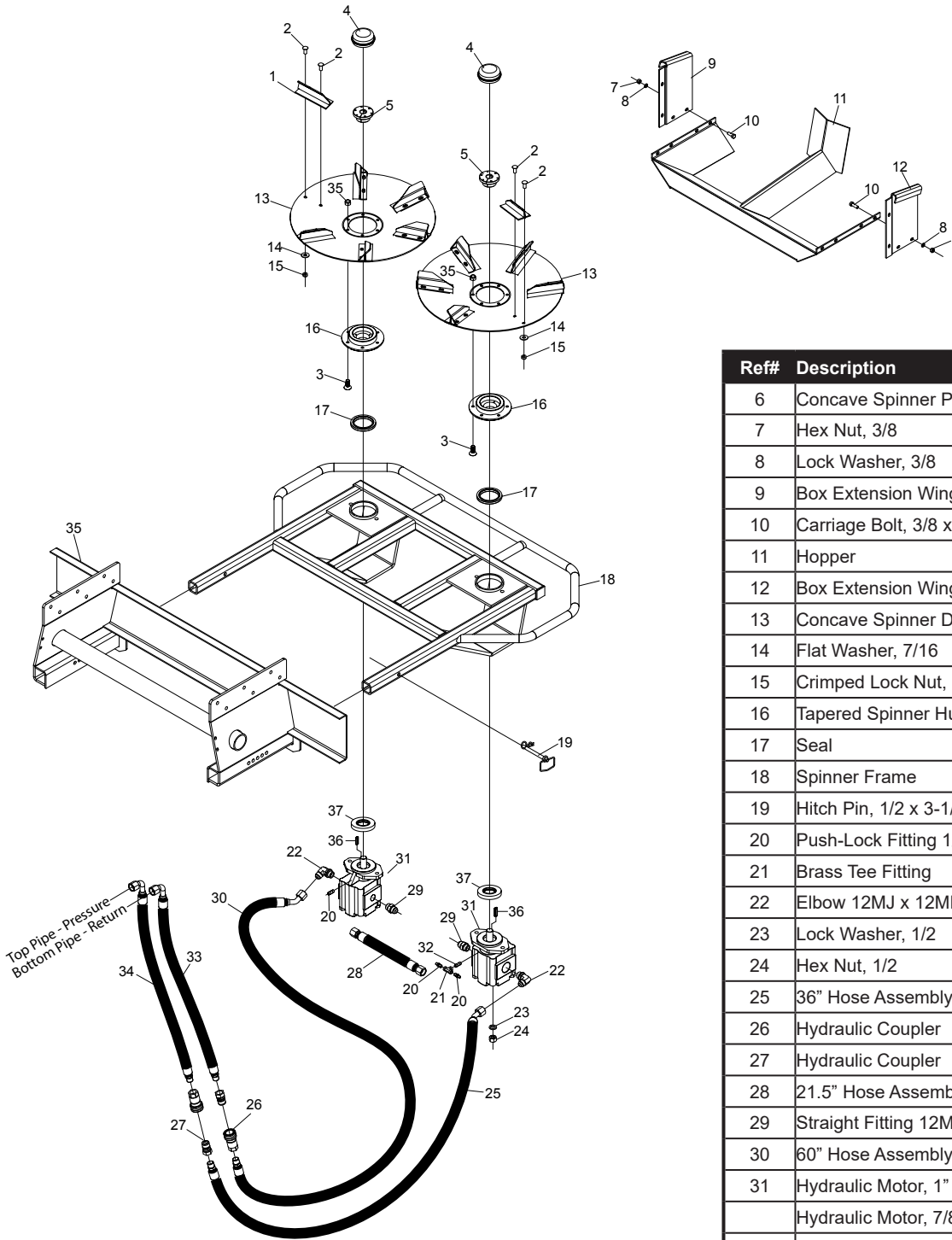
Spinner Assembly, 87550+



| Ref# | Description | Part# |
|------|-------------------------------------|--------|
| 6 | Spinner Paddle, Left | 830267 |
| 7 | Hex Nut, 3/8 | 000915 |
| 8 | Lock Washer, 3/8 | 000820 |
| 9 | Box Extension Wing, Left | 830144 |
| 10 | Carriage Bolt, 3/8 x 1 | 000125 |
| 11 | Hopper | 830147 |
| 12 | Box Extension Wing, Right | 830079 |
| 13 | Spinner Disc | 830309 |
| 14 | Flat Washer, 7/16 | 001045 |
| 15 | Crimped Lock Nut, 7/16 | 000387 |
| 16 | Spinner Hub, Taper Mount | 830313 |
| 17 | Seal | 830317 |
| 18 | Spinner Frame | 830583 |
| 19 | Hitch Pin, 1/2 x 3-1/2 | 100292 |
| 20 | Push-Lock Fitting 1/4NPT | 290036 |
| 21 | Brass Tee Fitting | 290033 |
| 22 | Elbow 12MJ x 12MB | 290022 |
| 23 | Lock Washer, 1/2 | 000840 |
| 24 | Hex Nut, 1/2 | 000940 |
| 25 | 36" Hose Assembly | 830331 |
| 26 | Hydraulic Coupler | 290041 |
| 27 | Hydraulic Coupler | 290040 |
| 28 | 21.5" Hose Assembly | 830330 |
| 29 | Straight Fitting 12MJ x 12MB | 290065 |
| 30 | 60" Hose Assembly | 830332 |
| 31 | Hydraulic Motor, 1" Keyed Shaft | 830318 |
| | Hydraulic Motor, 7/8" Splined Shaft | 830153 |
| | Seal Kit for Motor | 830345 |
| | Replacement 1" Key Shaft | 830391 |
| | Replacement 7/8"-13 Splined Shaft | 830710 |
| 32 | Brass Nipple | 290039 |
| 33 | 20" Hose Assembly | 830341 |
| 34 | 25" Hose Assembly | 830342 |
| 35 | Spinner Socket | 830589 |
| 36 | 1/4" x 3/8" x 1-1/4" Key | 830390 |
| 37 | Outer Seal | 830389 |

| Ref# | Description | Part# |
|------|-------------------------------|--------|
| 1 | Spinner Paddle, Right | 830265 |
| 2 | Carriage Bolt, 7/16 x 1 | 000356 |
| 3 | Carriage Bolt, 7/16 x 1-1/2 | 000359 |
| 4 | Cap | 830314 |
| 5 | Tapered Bushing, 1" Round | 505420 |
| | Tapered Bushing, 7/8" Splined | 830351 |

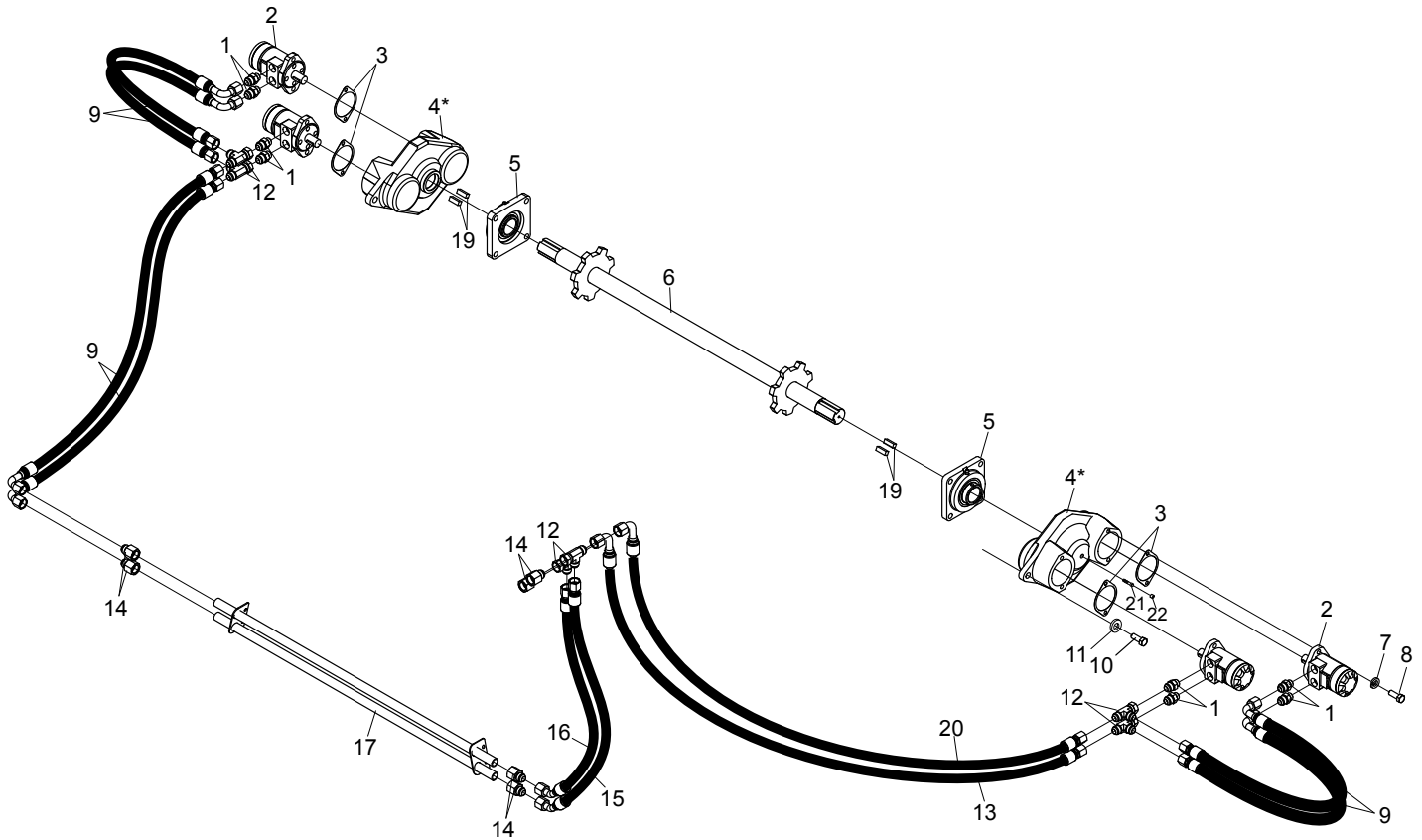
Fertilizer Package Option (Concave Discs)



| Ref# | Description | Part# |
|------|--------------------------------------|--------|
| 1 | Concave Spinner Paddle, Right | 830620 |
| 2 | Carriage Bolt, 7/16 x 1 | 000356 |
| 3 | 3/8" x 1" Flat-Head Socket Cap Screw | 000128 |
| 4 | Cap | 830314 |
| 5 | Tapered Bushing, 1" Round | 505420 |
| | Tapered Bushing, 7/8" Splined | 830351 |

| Ref# | Description | Part# |
|------|-------------------------------------|--------|
| 6 | Concave Spinner Paddle, Left | 830627 |
| 7 | Hex Nut, 3/8 | 000915 |
| 8 | Lock Washer, 3/8 | 000820 |
| 9 | Box Extension Wing, Left | 830144 |
| 10 | Carriage Bolt, 3/8 x 1 | 000125 |
| 11 | Hopper | 830147 |
| 12 | Box Extension Wing, Right | 830079 |
| 13 | Concave Spinner Disc | 830623 |
| 14 | Flat Washer, 7/16 | 001045 |
| 15 | Crimped Lock Nut, 7/16 | 000387 |
| 16 | Tapered Spinner Hub | 830629 |
| 17 | Seal | 830317 |
| 18 | Spinner Frame | 830583 |
| 19 | Hitch Pin, 1/2 x 3-1/2 | 100292 |
| 20 | Push-Lock Fitting 1/4NPT | 290036 |
| 21 | Brass Tee Fitting | 290033 |
| 22 | Elbow 12MJ x 12MB | 290022 |
| 23 | Lock Washer, 1/2 | 000840 |
| 24 | Hex Nut, 1/2 | 000940 |
| 25 | 36" Hose Assembly | 830331 |
| 26 | Hydraulic Coupler | 290041 |
| 27 | Hydraulic Coupler | 290040 |
| 28 | 21.5" Hose Assembly | 830330 |
| 29 | Straight Fitting 12MJ x 12MB | 290065 |
| 30 | 60" Hose Assembly | 830332 |
| 31 | Hydraulic Motor, 1" Keyed Shaft | 830318 |
| | Hydraulic Motor, 7/8" Splined Shaft | 830153 |
| | Seal Kit for Motor | 830345 |
| | Replacement 1" Key Shaft | 830391 |
| | Replacement 7/8"-13 Splined Shaft | 830710 |
| 32 | Brass Nipple | 290039 |
| 33 | 20" Hose Assembly | 830341 |
| 34 | 25" Hose Assembly | 830342 |
| 35 | 3/8 Top Lock Nut | 000917 |
| 36 | 1/4" x 3/8" x 1-1/4" Key | 830390 |
| 37 | Outer Seal | 830389 |

Dual Web Drive Option

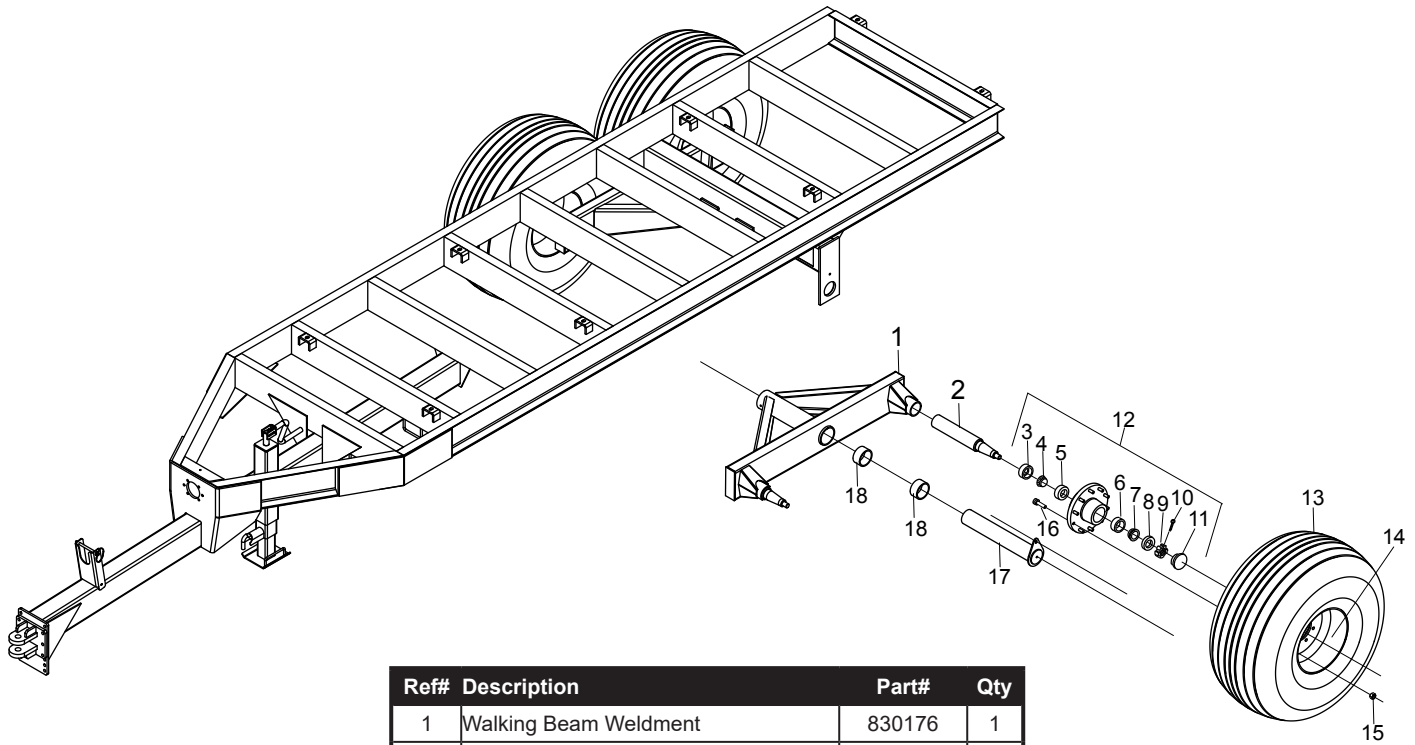


*Note: Double Drive Gearbox (ID 4) was changed at serial number 95785. Old gearbox (801098) is no longer available and will be substituted with new gearbox (801418). Limited Parts are available for old gearbox.

| Ref# | Description | Part# | Qty |
|------|-------------------------------|--------|-----|
| 1 | Straight Fitting, 12MJ x 10MB | 290001 | 8 |
| 2 | Web Drive Motor | 830171 | 4 |
| | Hyd Motor Seal Kit | 800135 | |
| 3 | Gasket | 830251 | 4 |
| 4 | Double Drive Gearbox | 801418 | 2 |
| | Seal, Double Drive Gearbox | 800136 | |
| 5 | 2" Flange Bearing | 801100 | 2 |
| 6 | Rear Apron Shaft | 830183 | 1 |
| 7 | Lock Washer, 1/2" | 000840 | 8 |
| 8 | Bolt, 1/2 x 1-1/2 | 000435 | 8 |
| 9 | 25" Hose Assembly | 830333 | 6 |
| 10 | Bolt, 5/8 x 2 | 000615 | 2 |

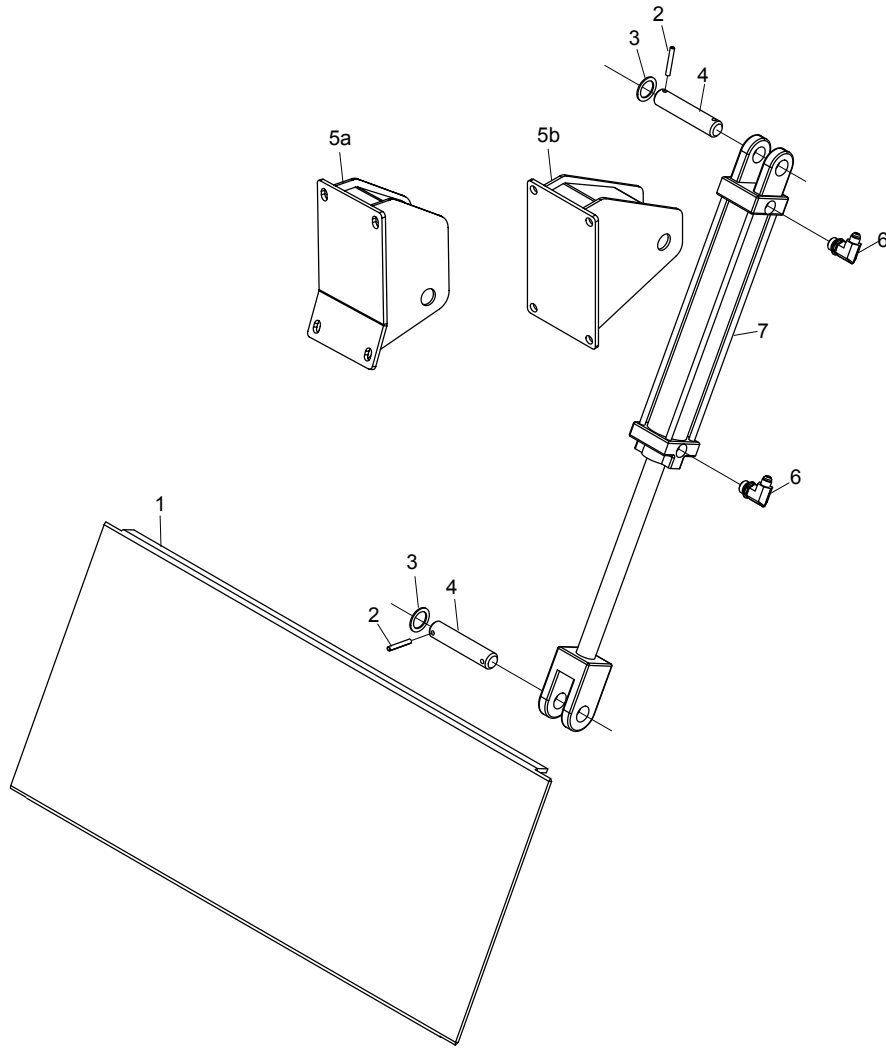
| Ref# | Description | Part# | Qty |
|------|----------------------------------|--------|-----|
| 11 | Flat Washer, 5/8" | 001075 | 2 |
| 12 | "T" Fitting, 12MJ x 12FJX x 12MJ | 290034 | 6 |
| 13 | 25" Hose Assembly | 830335 | 1 |
| 14 | Straight Fitting, 12MJ x 12FP | 290019 | 6 |
| 15 | 27" Hose Assembly | 830396 | 1 |
| 16 | 23"-1/2" Hose Assembly | 830397 | 1 |
| 17 | Supply Line Weldment | 830598 | 1 |
| 18 | Hose Assembly | 830395 | 2 |
| 19 | Key, 1/2 x 1/2 x 1-1/2 | 830329 | 4 |
| 20 | 27" Hose Assembly | 830334 | 1 |
| 21 | Socket Head Bolt, 5/16 x 1-1/4 | 000231 | 2 |
| 22 | Plug, 1/2" NPT | 290025 | 2 |

Heavy Duty Axle Option



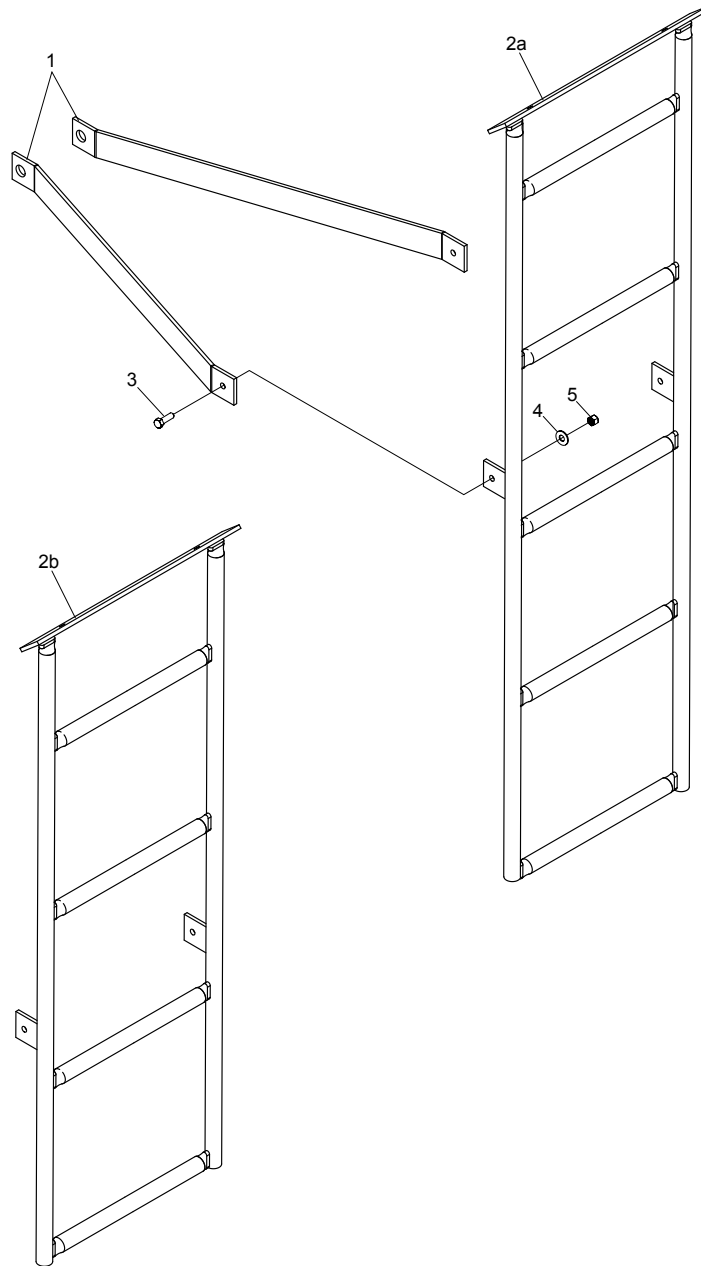
| Ref# | Description | Part# | Qty |
|------|--------------------------------|--------|-----|
| 1 | Walking Beam Weldment | 830176 | 1 |
| 2 | Spindle | 830178 | 2 |
| 3 | Grease Seal | 830377 | 2 |
| 4 | Bearing, 460 | 830376 | 2 |
| 5 | Race, 453A | 830381 | 2 |
| 6 | Race, 33462 | 830380 | 2 |
| 7 | Bearing, 33275 | 830375 | 2 |
| 8 | Spindle Washer | 830379 | 2 |
| 9 | Spindle Nut | 830378 | 2 |
| 10 | Cotter Pin, 1/4 x 2 | 001230 | 2 |
| 11 | Dust Cap (bolt on) | 830383 | 2 |
| | Dust Cap Gasket | 830384 | 2 |
| | Dust Cap Bolt | 830385 | 8 |
| 12 | Complete Hub | 830179 | 2 |
| 13 | Tire, 500/50-17 16ply | 830255 | |
| | Tire, 445/50R22.5 Super Single | 830369 | |
| | Tire, 550/45-22.5 16ply | 830604 | |
| 14 | Wheel, 17 x 16 - 10-Bolt | 830256 | |
| | Wheel, 22.5 x 13.5 10-Bolt | 830368 | |
| | Wheel, 22.5 x 16 - 10-Bolt | 830605 | |
| 15 | Lug Nut | 830382 | 20 |
| 16 | Lug Bolt, 3/4-16 x 3 | 830373 | 20 |
| 17 | Pivot Pin | 830042 | 1 |
| 18 | Bronze Bushing | 702340 | 2 |

Hydraulic Endgate Option



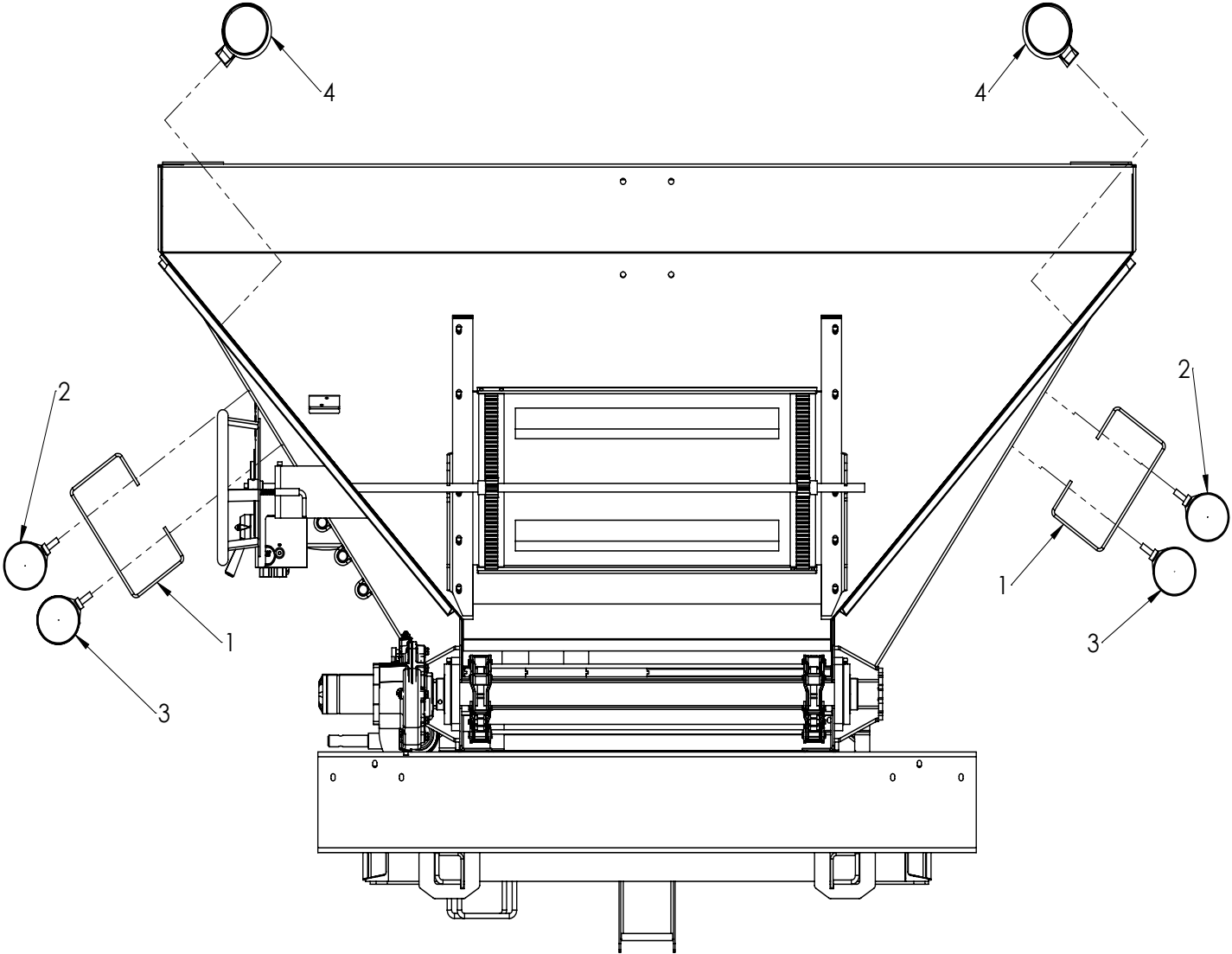
| Ref# | Description | Part# | Qty |
|------|-------------------------------|--------|-----|
| 1 | Endgate Weldment | 830273 | 1 |
| 2 | Roll Pin, 1/4 x 1-3/4 | 500187 | 4 |
| 3 | Bushing | 001008 | 4 |
| 4 | Pivot Pin | 701021 | 2 |
| 5a | Cylinder Mount, Current Style | 830713 | 1 |
| 5b | Cylinder Mount, Old Style | 830277 | 1 |
| 6 | Elbow Fitting | 290255 | 2 |
| 7 | Cylinder | 830300 | 1 |

Ladder Option



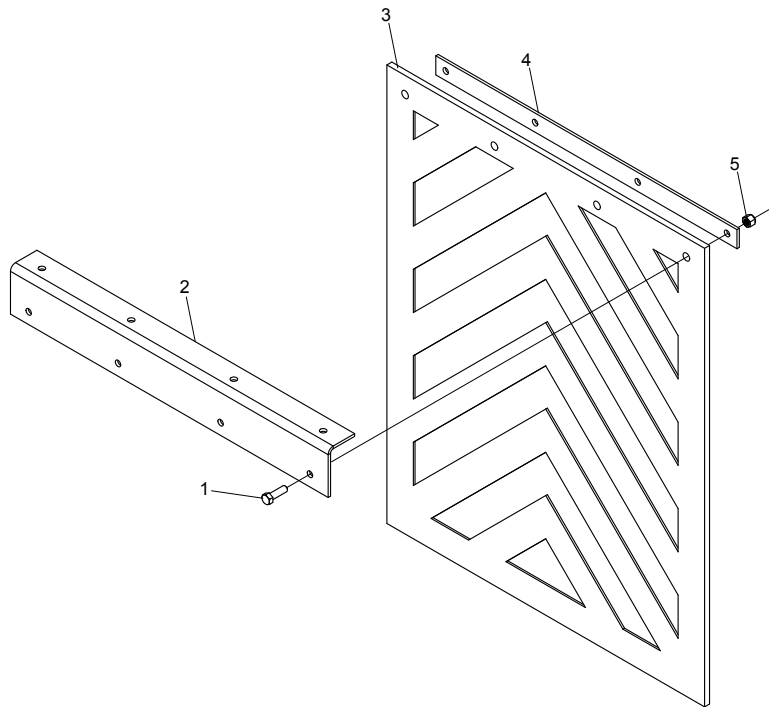
| Ref# | Description | Part# | Qty |
|------|--------------------------------|--------|-----|
| 1 | Ladder Brace | 830130 | 2 |
| 2a | Ladder Weldment, Current Style | 830635 | 1 |
| 2b | Ladder Weldment | 830129 | 1 |
| 3 | 3/8" x 1-1/4" Hex Head Bolt | 000275 | 2 |
| 4 | 3/8" Flat Washer | 001035 | 2 |
| 5 | 3/8" Nylon Locknut | 003000 | 2 |
| | Complete Ladder Kit | 840020 | |

Lighting Option



| Ref# | Description | Part# | Qty |
|------|-------------------|--------|-----|
| 1 | Light Guard | 830152 | 2 |
| 2 | Amber/Amber Light | 507164 | 2 |
| 3 | Blank/Red Light | 830160 | 2 |
| 4 | Flood Light | 507176 | 2 |

Mud Flap Option



| Ref# | Description | Part# | Qty |
|------|--------------------|--------|-----|
| 1 | Bolt, 3/8 x 1-1/4 | 000275 | 4 |
| 2 | Mud Flap Hanger | 830252 | 1 |
| 3 | Mud Flap | 830254 | 1 |
| 4 | Mud Flap Strip | 830253 | 1 |
| 5 | Nylon Locknut, 3/8 | 003000 | 4 |

Camera Option



1



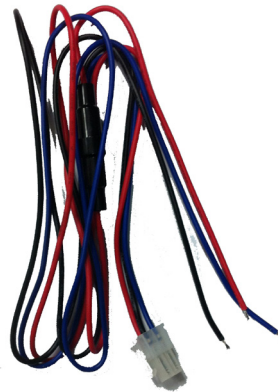
2



3



4



5

| Ref# | Description | Part# | Qty |
|------|-----------------------------|--------|-----|
| 1 | Cable | 830374 | 1 |
| 2 | Lens w/ cable | 830582 | 1 |
| 3 | Monitor | 830580 | 1 |
| 4 | A/V Control Box | 830581 | 1 |
| 5 | A/V Control Box Power Cable | 830575 | 1 |