

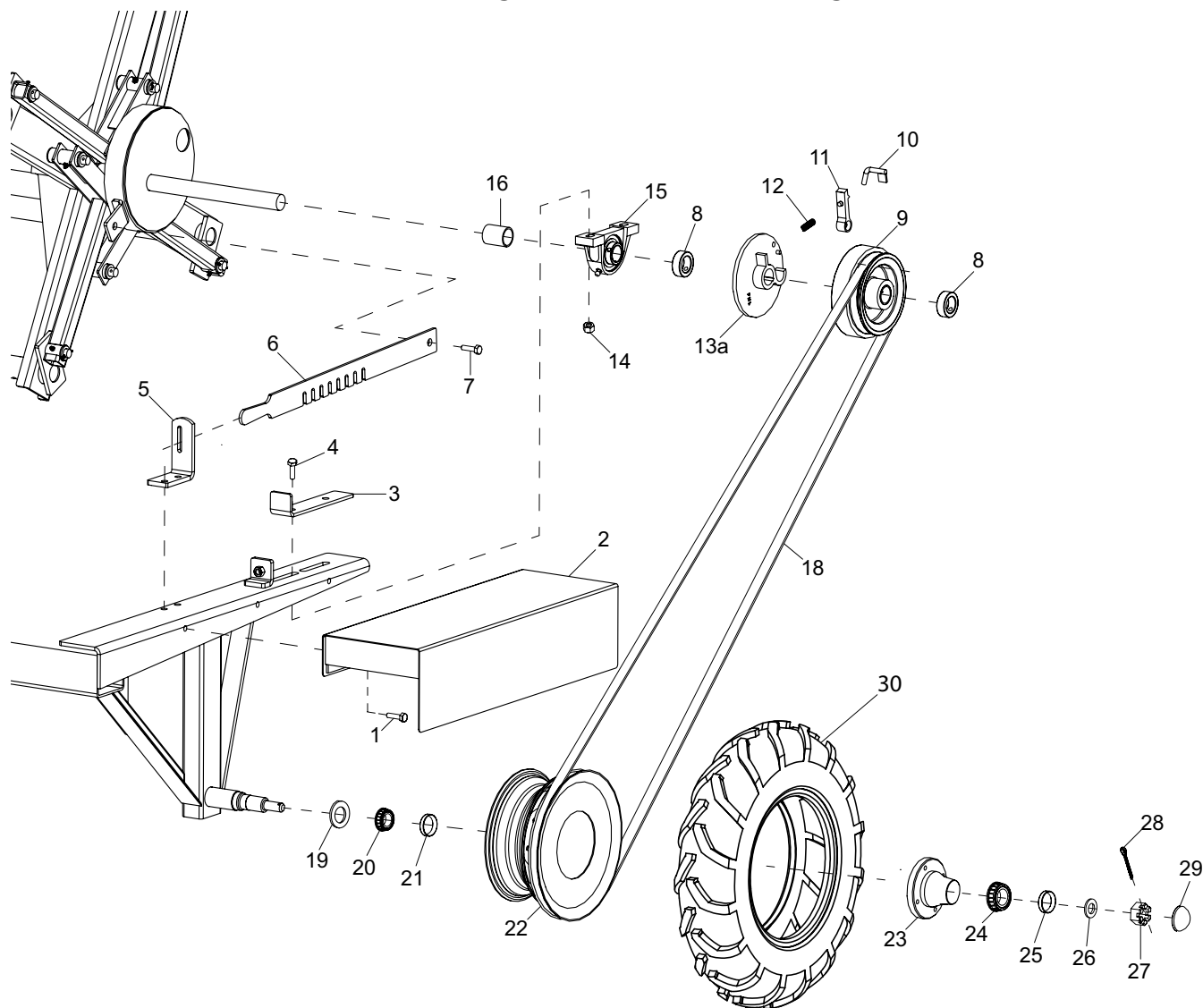


710/910 Ground Drive Fluffer Tedder

Illustrated Parts Breakdown

Page 1	Drive Assembly
Page 2	Cam Roller Assembly
Page 3	Frame and Reel, 910G
Page 4	Frame and Reel, 710G

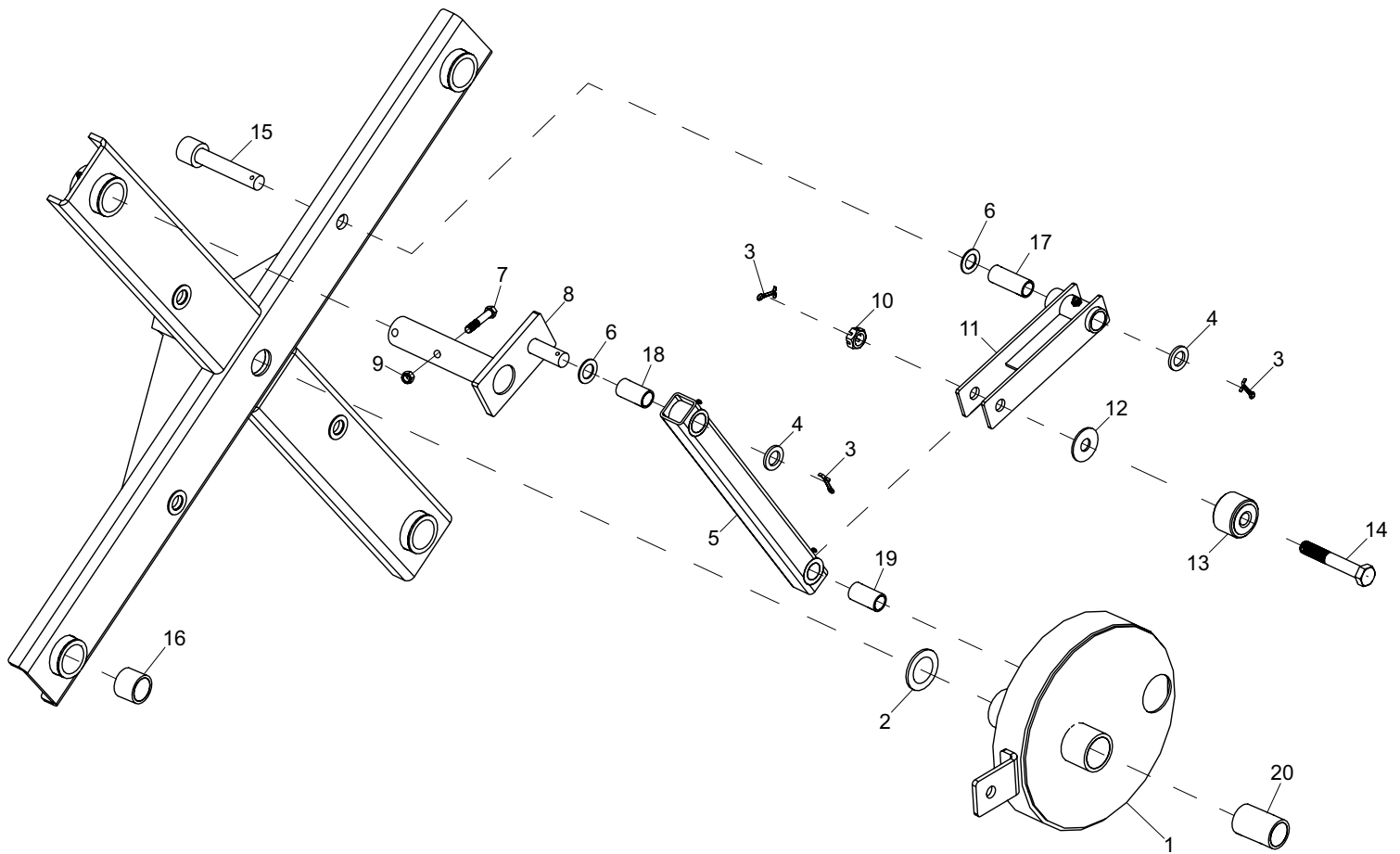
Pulley Drive Assembly



ID	Description	710G	910G
1	3/8" x 1-1/4" Hex Head Bolt	000275	
2	Pulley Shield Weldment	700305	
3	Bearing Holder	700182	
4	9/16" x 2-1/4" Hex Head Bolt	000600	
5	Lever Bracket	700181	
6	Tine Pitch Adjustment Lever	700180	
7	5/8" x 1-1/2" Hex Head Bolt	000610	
8	1.375" Shaft Collar	700285	
9	V-Pulley Casting Fab Assembly	700280	
10	Engaging Lever Weldment	700282	
11	Pawl Casting	700281	
12	Compression Spring	700284	
13a	Backer Plate Assembly, Left	700286	
13b	Backer Plate Assembly, Right	700295	
14	9/16" Hex Nut	000965	
15	Pillow Block Bearing	700183	
16	Bronze Bushing	700099	

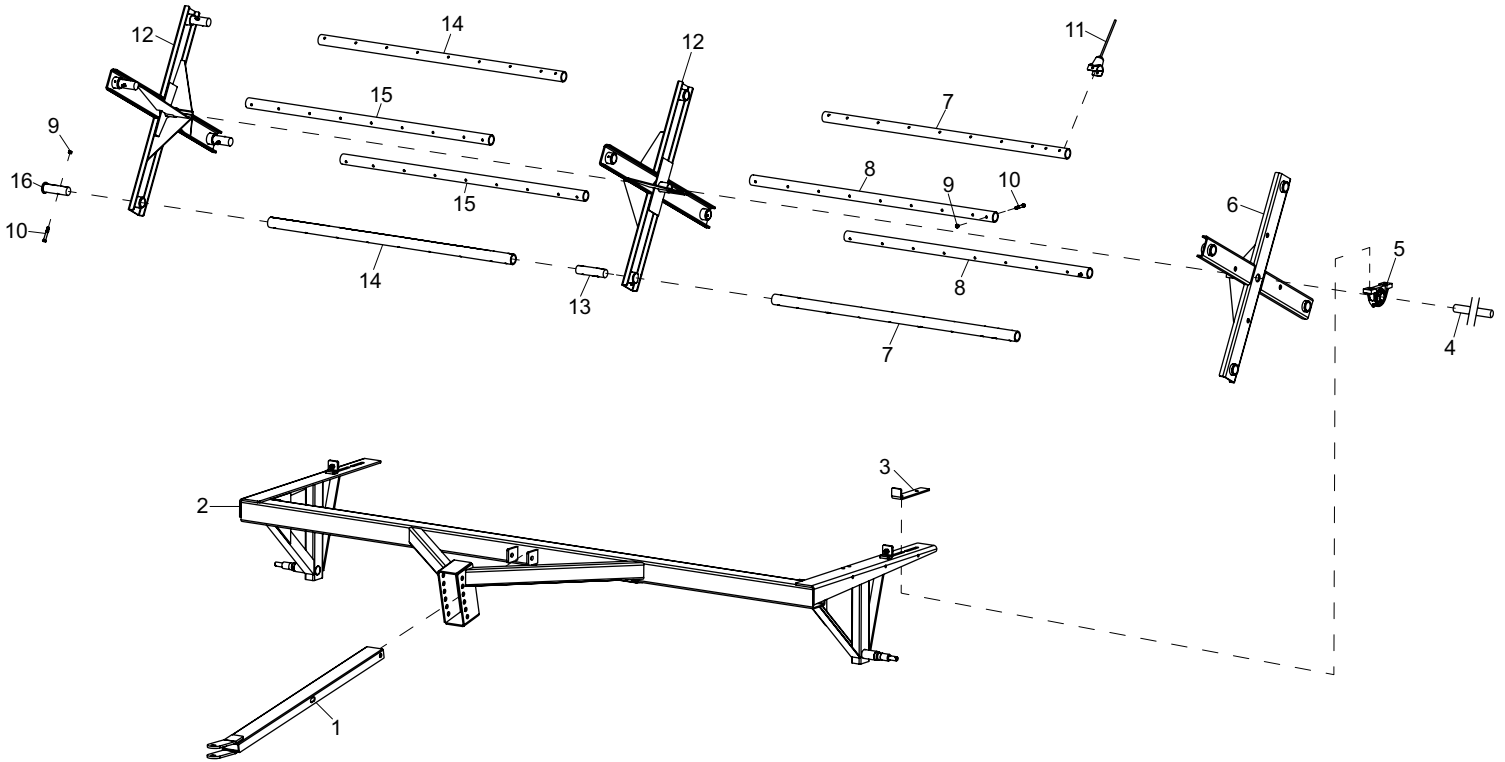
ID	Description	710G	910G
17	5/8" Hex Nut		000970
18	CX72 Belt	700300	
	CX64 Belt	700304	
19	Grease Seal	700030	
20	Bearing (Inner)	700142	
21	Race (Inner)	700143	
22	Wheel with 12" Pulley (Tractor Driven)	700301	
	Wheel with 16" Pulley (Horse Driven)	700297	
	Steel Wheel Assembly w/ Pulley	700314	
23	Hub Assembly	700027	
24	Bearing (Outer)	700028	
25	Race (Outer)	700029	
26	Spindle Washer	700032	
27	Spindle Nut	700034	
28	1/8" x 2" Cotter Pin	700033	
29	Hub Cap	700035	
30	Traction Tire	401373	

Cam Roller Assembly



ID	Description	910G
1	Cam Roll Box Weldment	700094
2	1-3/8" x 2-1/8" 10 Ga. Bushing	001510
3	5/32" x 1-1/4" Cotter Pin	400406
4	3/4" x 1-1/4" 10 Ga. Bushing	400146
5	Crank Arm w/ Bushings	700076
6	3/4" x 1-1/4" 14 Ga. Bushing	400148
7	3/8" x 2-1/2" Hex Head Bolt	000300
8	Crank Arm Stud Weldment	700072
9	3/8" Hex Nut	000915
10	5/8" Slotted Hex Nut	700021
11	Crank Arm Holder w/ Bushing	700083
12	5/8" USS Flat Washer	001075
13	Cam Roller Bearing	700089
14	Cam Roller Bolt	700090
15	Reel Arm Stud Pin Weldment	700058
16	Crank Cross Arm Bushing	700054
17	Crank Arm Holder Bushing	700087
18	Crank Arm Bronze Bushing, Crank Side	700080
19	Crank Arm Bronze Bushing, Holder Side	700081
20	Cam Roll Box Bronze Bushing	700099

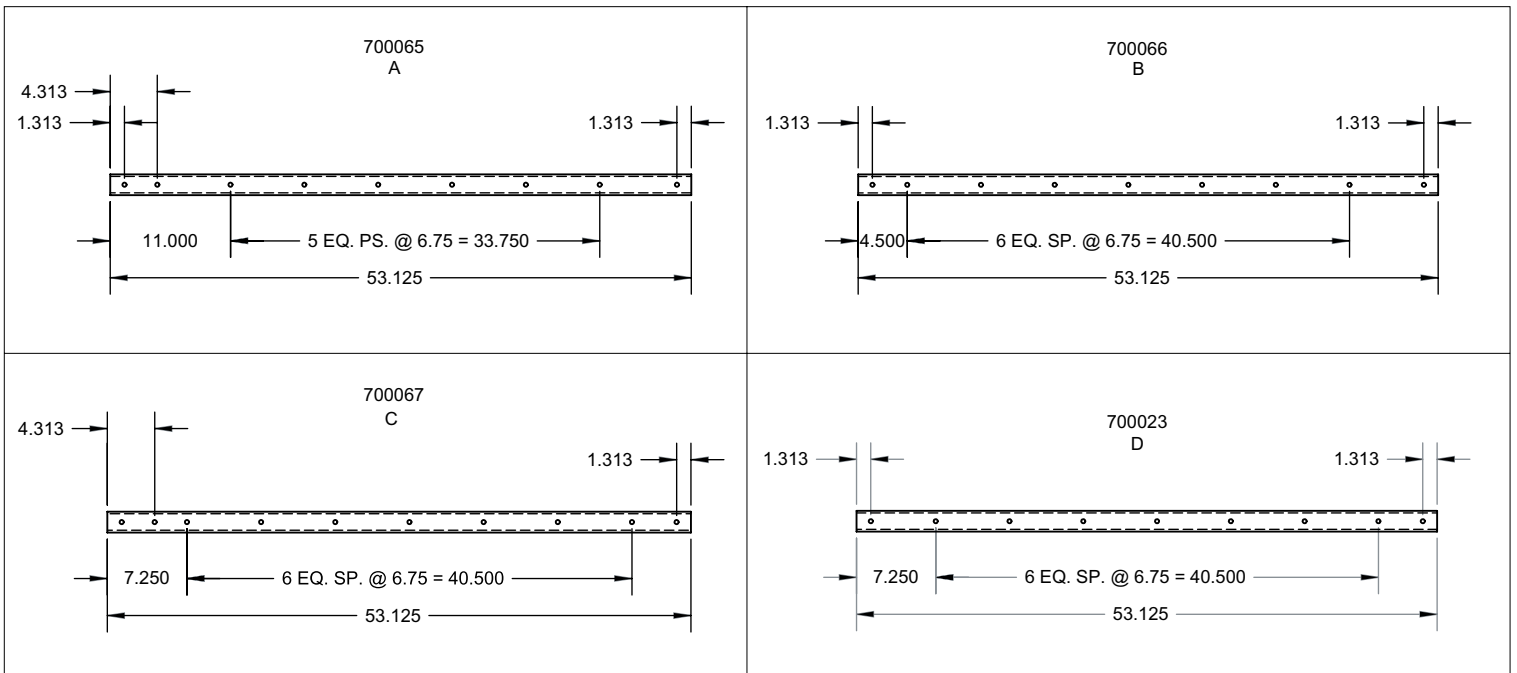
Frame and Reel, 910G



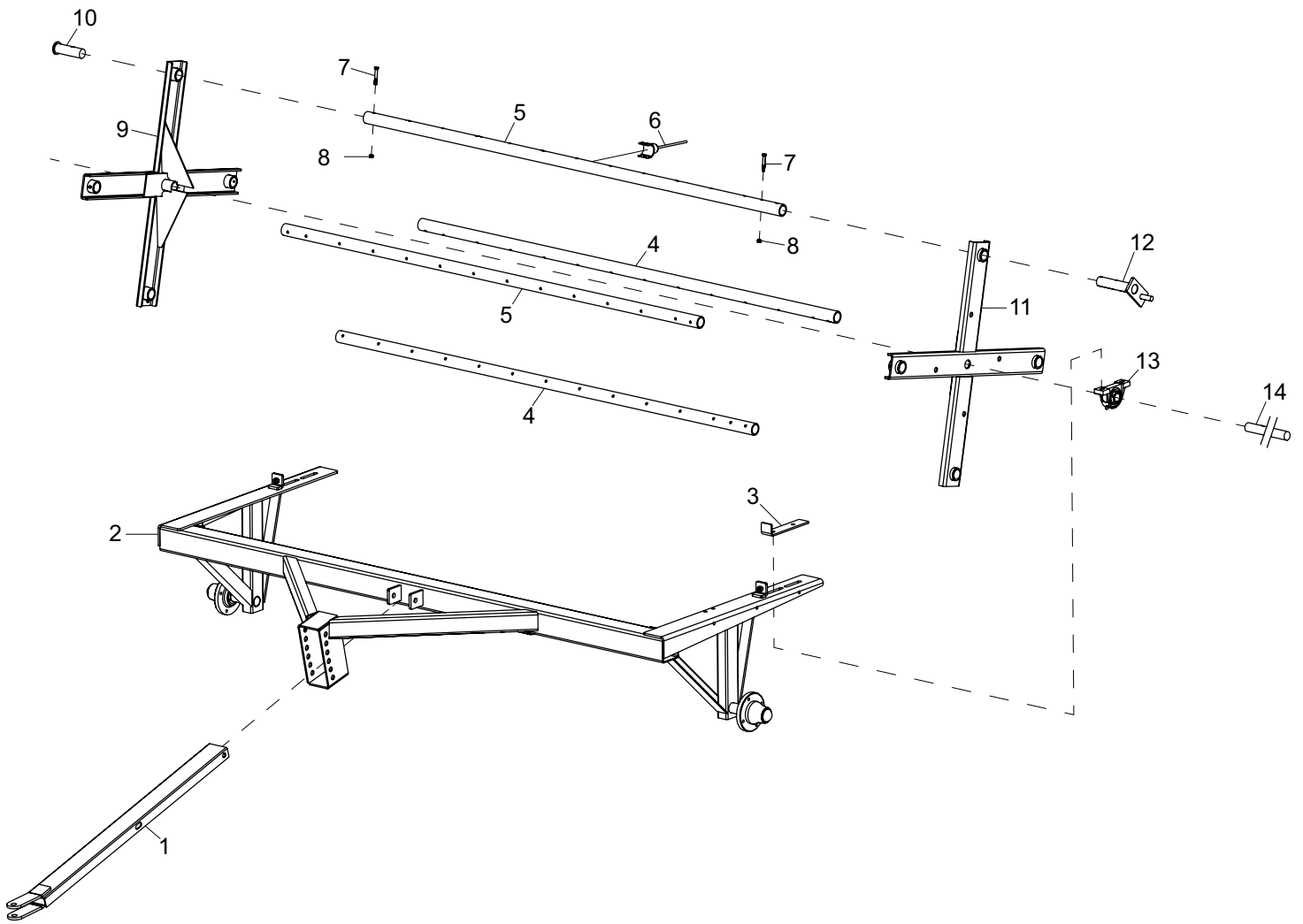
ID	Description	Part #
1	Tongue Assembly	700267
2	Main Frame Assembly	700268
3	Bearing Holder	700182
4	1-3/8" Reel Shaft	700278
5	1-3/8" Pillow Block Bearing	700183
6	Left Crank Cross Arm Assembly	700050
7	Reel Pipe C, Left	700067
8	ReelPipe A, Left	700065

ID	Description	Part #
9	3/8" Hex Nut	000915
10	3/8" x 2-1/2" Bolt	000300
11	Fluffer Tedder Tine	700184
12	Cross Arm Weldment	700042
13	Reel Pipe Stud, Center	700071
14	Reel Pipe B, Right	700066
15	Reel Pipe D, Right	700023
16	Reel Pipe Stud, Right	700068

See illustrations below when ordering reel pipes.



Frame and Reel, 710G



ID	Description	Part #
1	Tongue Weldment	700267
2	Main Frame	700309
3	Bearing Holder	700182
4	13 Tine Reel Pipe	700197
5	12 Tine Reel Pipe	700196
6	Tine	700184
7	3/8" x 2-1/2" Hex Head Bolt	000300

ID	Description	Part #
8	3/8" Hex Nut	000915
9	Cross Arm Weldment	700042
10	Reel Pipe Stud Weldment	700068
11	Crank Cross Arm Weldment	700050
12	Crank Arm Stud Weldment	700072
13	1-3/8" Pillow Block Bearing	700183
14	710G Reel Shaft	700313